



UPDATES

SC HOSA CHAIR:
JEREMY SEARSON
RIVER BLUFF HIGH SCHOOL



SC HOSA 2022-2024

BOARD OF DIRECTORS EXECUTIVE TEAM



-  Chair – Jeremy Searson – River Bluff High School
-  Chair-Elect– Hanna Beckman – Ashley Ridge High School
-  Secretary – Nicholas Hanle – Center for Public Health & Advanced Medical Studies
-  Treasurer– Maxine McCraw – Industry Rep/SC HOSA
-  Immediate Past Chair – Lisa Hallman– Saluda High School
-  Officer Coaches- Katrina Haynes- Cyber Academy of SC
Amy Donaldson- Center for Public Health & Advanced Medical Studies
- OTHERS**
-  SC HOSA Administrative Specialist – Amanda Wilson
-  SC HOSA Director/State Advisor – Angel Clark



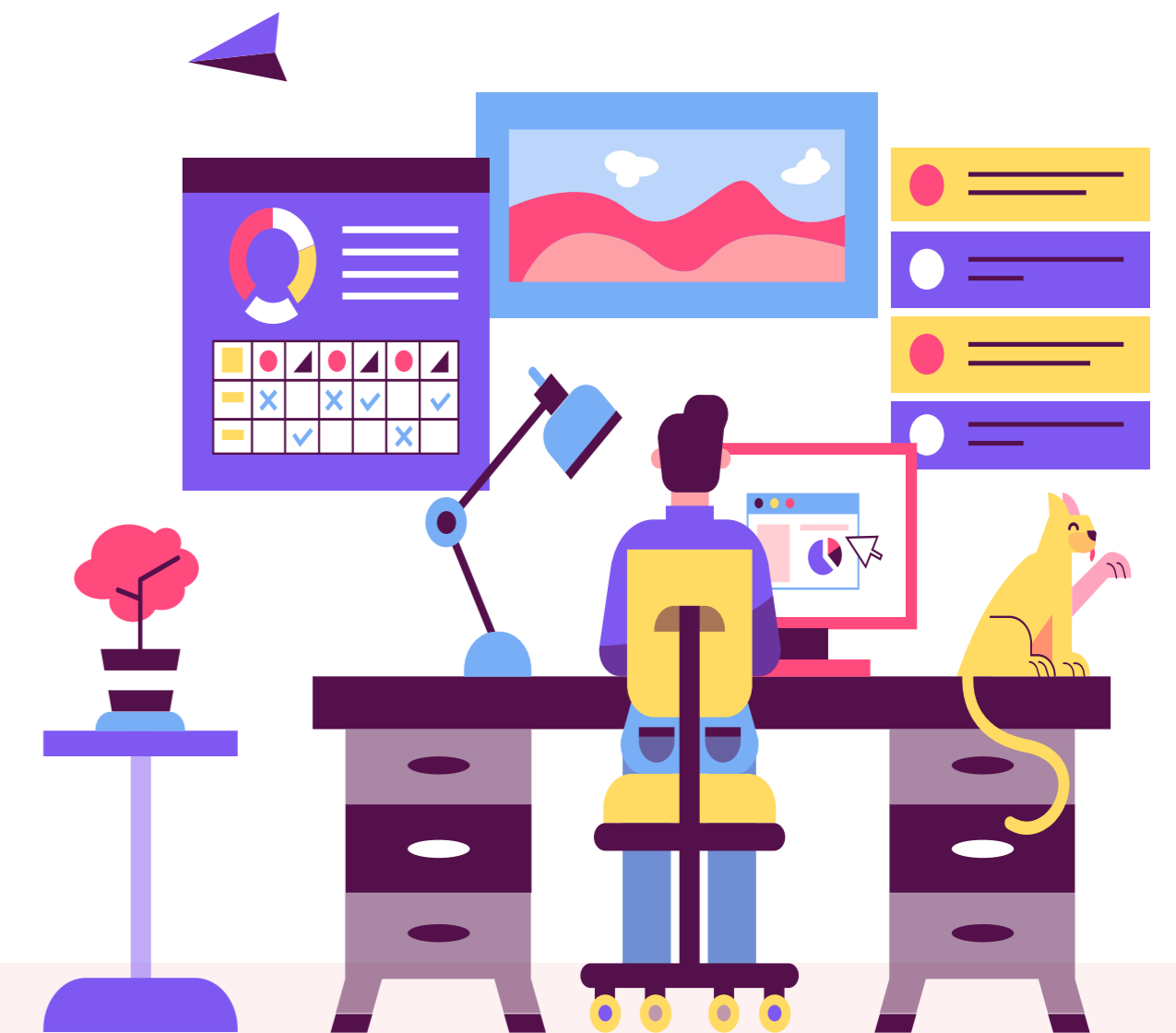
SC HOSA SLC 2023 AWARDS



SC HOSA **Outstanding HOSA Advisor of the Year** – Amy Donaldson– Center for Public Health and Advanced Medical Studies

SC HOSA **Advisor Salute** – ~*Amanda Bolin* – Cyber Academy of SC – HSE Treasurer
~*Lori Jackson*, Nation Ford High School
~*Kellie Flowers*, Darlington Institute of Technology

SC HOSA **Partner of the Year**– *Newberry College*



2023 - 2024 SC HOSA STATE OFFICERS



President – Meredith Stewart, River Bluff High School



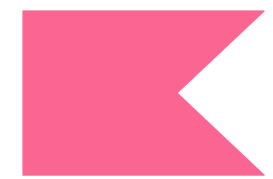
Vice President – Grace Haines, University of South Carolina



Vice President (Post-Secondary) – Gunja Patel, University of South Carolina



Secretary – Gensis Jones, Center for Public Health & Advanced Medical Studies



Reporter – Paris Mayes, Blacksburg High School



Community & Membership Liaison – Jeet Sridhar, River Bluff High School



2023



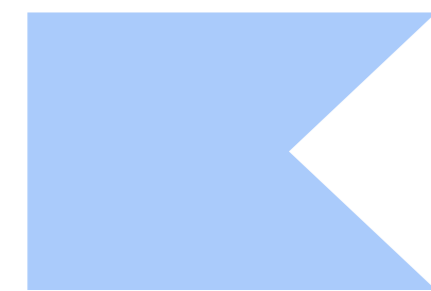
INTERNATIONAL LEADERSHIP CONFERENCE



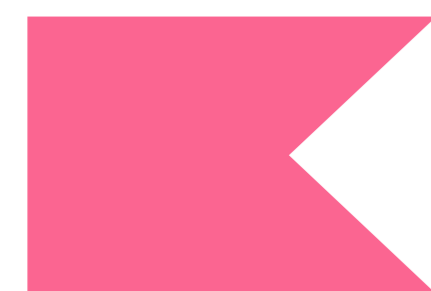
Close to 30 students recognized on stage for competitive events and scholarships



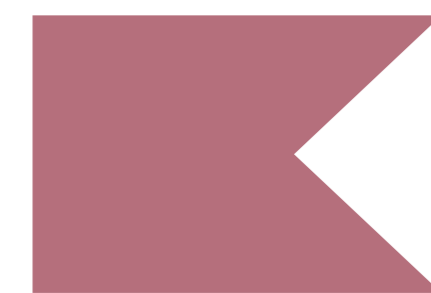
Approximately 30 teachers assisted with competitive events



Four were involved with Competitive Event Management



Two were involved with the National Competitive Event Team



[2023 SC HOSA ILC Results](#)



2023 FALL LEADERSHIP CONFERENCE



OCTOBER 5, 2023

NEWBERRY COLLEGE

\$30 PER STUDENT/ADVISOR

INFO POSTED AT WWW.SCHOSA.ORG

MUST BE A MEMBER TO ATTEND.

REGISTRATION DEADLINE FOR A GUARANTEED T-SHIRT IS :
SEPTEMBER 13TH

LATE REGISTRATION DEADLINE IS:
SEPTEMBER 26TH

hosa future health professionals SOUTH CAROLINA 2023
FALL LEADERSHIP CONFERENCE

The conference is designed for:
CURRENT FUTURE CHAPTER OFFICERS ADVISORS

- ★ Competitive Events Fair
- ★ Career Awareness
- ★ Leadership Workshops
- ★ Keynote Speaker
- ★ National Service Project Information

For more conference information, visit www.schosa.org
or Contact Amanda Wilson schosa@outlook.com

REGISTRATION FEE: \$30 per person, max. of 20 students per chapter
Register early: our maximum registration number is 700.

PLEASE NOTE: There is a 1:10 ratio advisors/chaperone to students.
Thursday, October 5th - 8 AM - 3:00 PM - Newberry College

* Registration DEADLINE is SEPTEMBER 26 *

Students & Advisors must be a HOSA Member to register for the conference.
Not member of HOSA?
Consider joining & having a HOSA chapter at your school.
For more information, go to the "advisor page" on www.schosa.org
OR contact Angel Clark, aclark@ed.sc.gov

2023 -2024 HOSA MEMBERSHIP



IT'S TIME TO START RECRUITING FOR YOUR MEMBERSHIP THIS YEAR.

TO AFFILIATE A HOSA CHAPTER AT YOUR SCHOOL YOU MUST:

- HAVE FIVE (5) STUDENT MEMBERSHIPS AND
 - ONE (1) ADVISOR MEMBERSHIP

ALL CHAPTERS AFFILIATED BY OCTOBER 15, 2023, WITH AT LEAST FIVE MEMBERS AND ONE ADVISOR WILL BE RECOGNIZED IN OUR ON-LINE PROGRAM THIS YEAR

IF YOU ARE NEW OR NEED YOUR CHAPTER ID AND PASSWORD INFORMATION,
[HTTPS://WWW.SCHOSA.ORG/NEED-TO-START-A-HOSA-CHAPTER/](https://www.schosa.org/need-to-start-a-hosa-chapter/)



2023 -2024 HOSA MEMBERSHIP, CONTINUED...



STUDENTS CANNOT REGISTER AS MEMBERS ON THE SC HOSA WEBSITE THIS YEAR



ADVISORS, MUST REGISTER THEMSELVES AND ALL STUDENTS IN THE CONFERENCE MANAGEMENT SYSTEM (CMS).

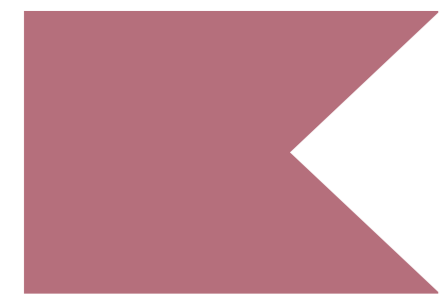


ADVISORS: IF YOU ARE INTERESTED IN STARTING A HOSA CHAPTER AT YOUR SCHOOL, COMPLETE OR FORM TO GET YOU STARTED.

[HTTPS://WWW.SCHOSA.ORG/NEED-TO-START-A-HOSA-CHAPTER/](https://www.schosa.org/need-to-start-a-hosa-chapter/)



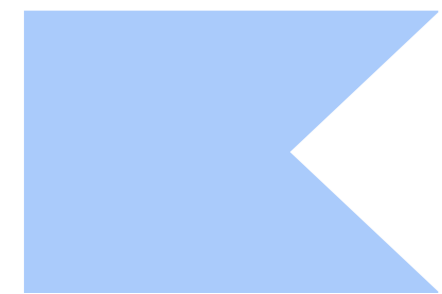
2023 -2024 HOSA MEMBERSHIP, CONTINUED...



ALL HEALTH SCIENCE TEACHERS OR POTENTIAL HOSA ADVISORS MUST BE REGISTERED AS A CHAPTER ADVISOR IN THE CONFERENCE MEMBERSHIP



HEALTH SCIENCE TEACHERS OR POTENTIAL HOSA ADVISORS MAY NOT REGISTER AS ALUMNI OR GUESTS/CHAPERONES FOR MEMBERSHIP OR CONFERENCE ATTENDANCE



EVEN HOSA EXECUTIVE LEVEL BOARD MEMBERS AND OFFICER COACHES MUST REGISTER AS A HOSA MEMBER AND AS A CONFERENCE ATTENDEE



ADVISOR TRAINING AT FALL LEADERSHIP AND VIA WEBINAR OR VIDEO RECORDING POST



HOSA HELPS STUDENTS:

- SET REALISTIC CAREER AND EDUCATIONAL GOALS
- DEVELOP WORKPLACE READINESS SKILLS
- UNDERSTAND CURRENT HEALTHCARE ISSUES
- DEVELOP EFFECTIVE LEADERSHIP QUALITIES AND SKILLS
- NETWORK WITH HEALTHCARE PROFESSIONALS
- PARTICIPATE IN COMMUNITY SERVICE ACTIVITIES
- BUILD SELF-CONFIDENCE, MOTIVATION AND ENTHUSIASM
- CELEBRATE ACCOMPLISHMENTS
- STRENGTHEN THEIR ACADEMIC AND TECHNICAL SKILLS
- CREATE FRIENDSHIPS AND SOCIAL NETWORKS
- EXPAND COMMUNICATION AND TEAMWORK SKILLS
- BUILD THEIR RESUME
- RECEIVE RECOGNITION
- HAVE OPPORTUNITIES TO WIN SCHOLARSHIPS



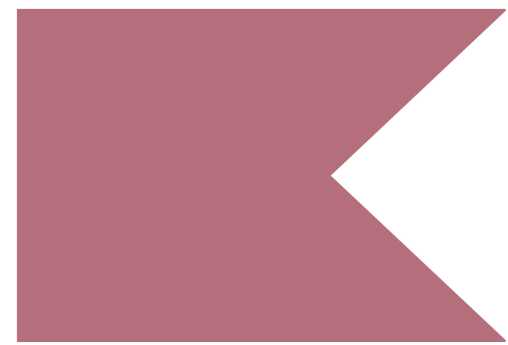
ADVISOR TRAINING AT FALL LEADERSHIP AND VIA WEBINAR OR VIDEO RECORDING POST



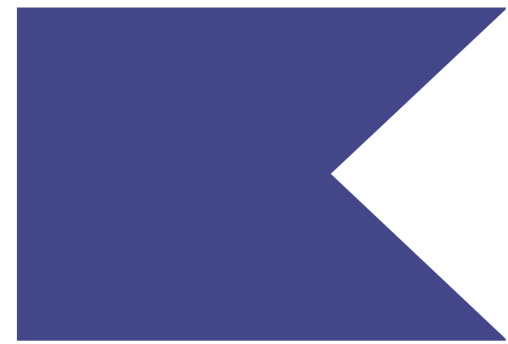
- HOW TO NAVIGATE THE HOSA WEBSITE
- HOW TO ADD MEMBERS
- HOW TO REGISTER FOR CONFERENCES
- HOW TO PRINT AN INVOICE
- HOW TO ENTER NATIONAL & STATE SERVICE PROJECTS & BJ HOURS/MONEY
- COMPETITIVE EVENTS
- RECOGNITION EVENTS
- FUNDRAISING
- HOW TO START A CHAPTER AND RECRUIT
- RESOURCES



HOSA EVENTS AND INFORMATION



SEE ALL THE NATIONAL CHANGES TO EVENTS AND ACCESS THE GUIDELINES LOCATED ON THE NATIONAL HOSA WEBSITE. [HTTP://WWW.HOSA.ORG/GUIDELINES](http://www.hosa.org/guidelines)



VISIT THE USEFUL TOOLS LINK. IT'S A LIFESAVER.
[HTTP://WWW.HOSA.ORG/CEUUsefulTools](http://www.hosa.org/CEUUsefulTools)

HOSA EVENTS AND INFORMATION



EVENTS NOT OFFERED AT THE STATE LEVEL

- CLINICAL LABORATORY SCIENCE
- CLINICAL NURSING (ONLY OFFERED TO PS- STUDENTS)
- COMMUNITY AWARENESS
- DENTAL SCIENCE
- EMOTIONAL WELL-BEING CHALLENGE (NATIONAL EVENT ONLY)
- FAMILY MEDICINE PHYSICIANS
- MRC PARTNERSHIP
- ORGANIZATIONAL LEADERSHIP
- OUTSTANDING HOSA ACHIEVEMENT
- OUTSTANDING HOSA LEADER
- PARLIAMENTARY PROCEDURE
- PHLEBOTOMY
- RESEARCH POSTER
- RESPIRATORY CARE

HOSA EVENTS AND INFORMATION, CONT'D...



SC HOSA WILL BE OFFERING 7 OF THE NATIONAL GEOGRAPHIC LEARNING ACADEMIC TESTING CENTER (NGL-ATC) EVENTS THIS YEAR. THESE TESTING EVENTS WILL BE TAKEN DURING THE TESTING PERIOD, THE WEEK PRIOR TO THE CONFERENCE. \$10/TEST

- AAFP FAMILY MEDICINE CAREER IS
- ALLIED HEALTH STATISTICS
- ANATOMY & PHYSIOLOGY
- CAREER DEVELOPMENT
- LEADERSHIP
- MICROBIOLOGY
- OCCUPATIONAL SAFETY & HEALTH

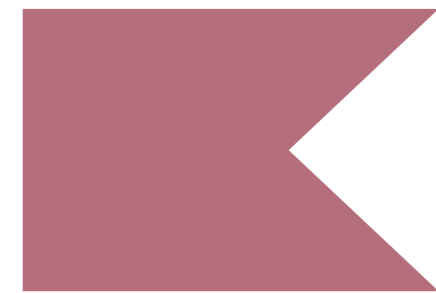
ALL CHANGES, DELETIONS, AND ADDITIONS WILL BE ANNOUNCED AT FALL LEADERSHIP AND POSTED ON THE STATE LEADERSHIP PAGE BY 10/15/23

AT THIS TIME, WE HAVE NOT DECIDED IF WE WILL HAVE ANY IN PERSON MIDDLE SCHOOL EVENTS AT THE STATE CONFERENCE

HOSA SERVICES



SERVICE PROJECTS– NATIONAL AND STATE



NATIONAL – BE THE MATCH

[DONATE MARROW OR BLOOD STEM CELLS | BE THE MATCH](#)



STATE – NATIONAL ALLIANCE ON MENTAL ILLNESS (NAMI)

[FIND YOUR LOCAL NAMI | NAMI: NATIONAL ALLIANCE ON MENTAL ILLNESS](#)

BE PREPARED

STATE LEADERSHIP CONFERENCE

MARCH 13-15, 2024

CHARLESTON, SC

CONFERENCE REGISTRATION OPENS DECEMBER 1, 2023

CHECK OUT THE 2024 CONFERENCE GUIDE: [HTTPS://WWW.SCHOSA.ORG/STATE-CONFERENCE-INFORMATION-GUIDE/](https://www.schosa.org/state-conference-information-guide/)

- HOTEL RESERVATIONS OPEN JANUARY 10, 2024
- YOU **MUST** BE REGISTERED FOR THE CONFERENCE TO RESERVE A HOTEL ROOM
- YOU **MUST** COMPLETE A CONFERENCE VERIFICATION FORM (FORM OPENS AT 8AM ON JAN 10TH)

[CALENDAR OF EVENTS – SC HOSA FUTURE HEALTH PROFESSIONALS](#)



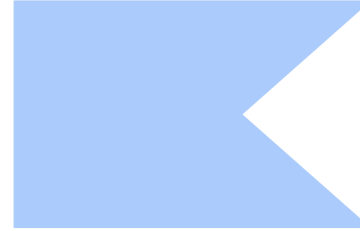

UPCOMING HOSA WEBINARS



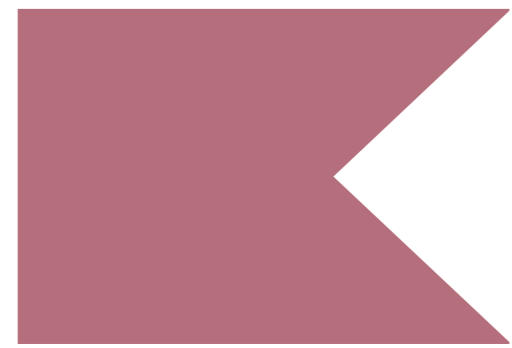
ALL DATES ARE TENTATIVE- ALL TIMES ARE 4PM (EXCEPT OCT 5)

ALL WEBINARS WILL USE THE SAME ZOOM LINK:

<https://us02web.zoom.us/j/82574390980?pwd=dUVpcGg5TFU3S05iYWtOdGJCV1hCdz09>

-  **OCTOBER 5** – HOSA SLC ORIENTATION. THIS SESSION WILL BE IN PERSON AT THE FALL LEADERSHIP CONFERENCE AT NEWBERRY COLLEGE. CHECK THE FALL LEADERSHIP CONFERENCE AGENDA FOR TIME AND LOCATION.
-  **DECEMBER 7** – HOSA SLC INFORMATION, HOW TO REGISTER, HOTEL RESERVATIONS, COMPETITIVE EVENTS
-  **FEBRUARY 7** – AVAILABLE THROUGH ZOOM FOR LAST MINUTE HOSA CONFERENCE QUESTIONS
-  **MARCH 20** – ANY HEALTH SCIENCE SPRING ANNOUNCEMENTS AND HOSA INTERNATIONAL LEADERSHIP CONFERENCE INFO / QUESTIONS

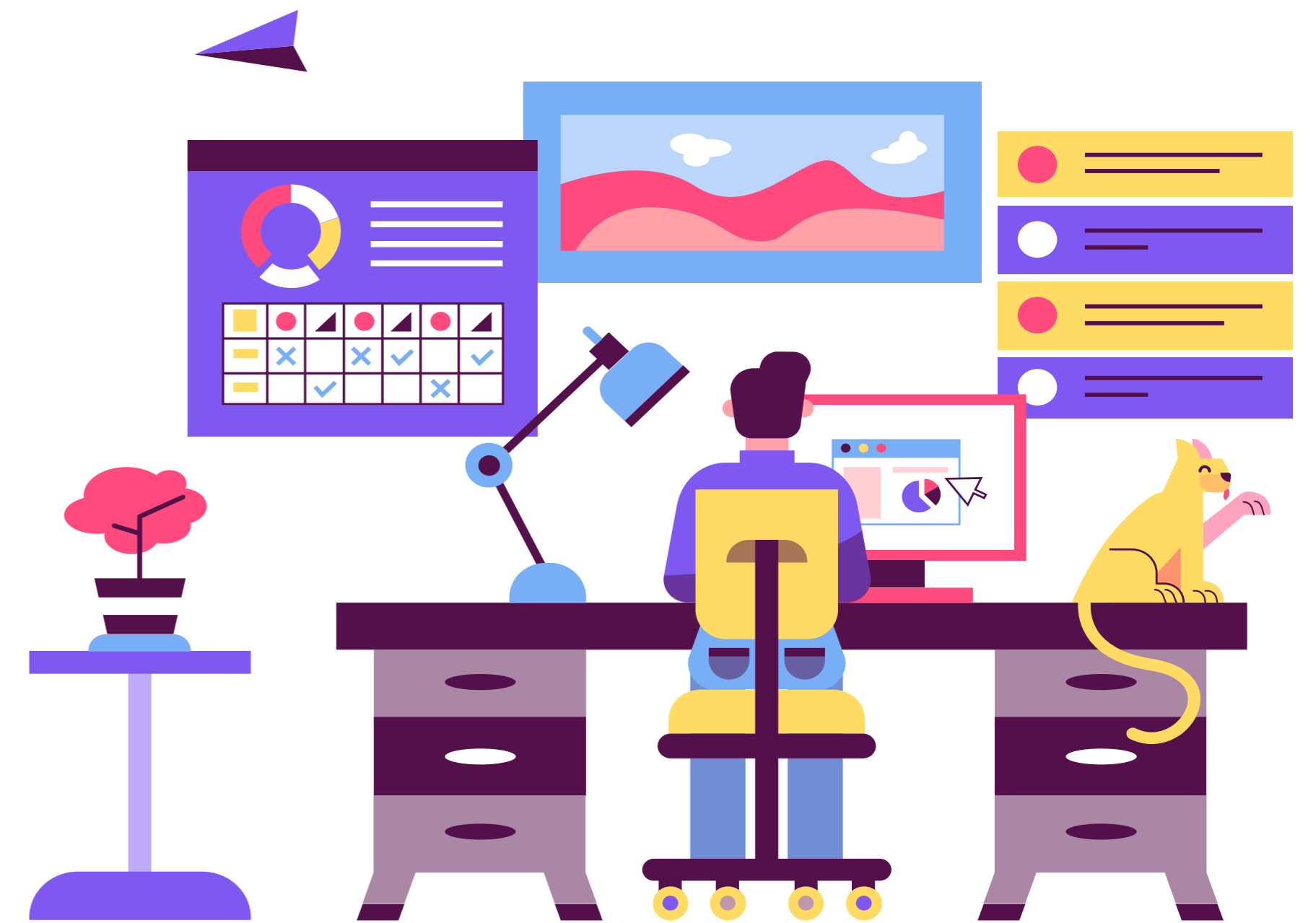
HOSA RESOURCES



WWW.SCHOSA.ORG



WWW.HOSA.ORG



CONTACT INFORMATION

ANGEL CLARK, MSN, RN

SCDE HEALTH SCIENCE EDUCATION ASSOCIATE

SC HOSA DIRECTOR/STATE ADVISOR

1429 SENATE STREET RM. 918-A

COLUMBIA, SC 29201

PHONE: (803) 734-0372

EMAIL: ACLARK@ED.SC.GOV

FALL 2023 – BACK TO SCHOOL

DIVISION OF COLLEGE AND CAREER

READINESS

Office of Career and Technical Education
Health Science Education

Angel W. Clark, MSN, RN



WHAT'S NEW IN HEALTH SCIENCE?

Updated National Standards

[Standards | National Consortium for HealthScienceEducation\(healthscienceconsortium.org\)](https://www.healthscienceeducation.org/standards)



WHAT'S NEW IN HEALTH SCIENCE

NO STANDARDS WERE UPDATED THIS SUMMER

UPDATED STANDARDS LAST SCHOOL YEAR 2022-23



Sports Medicine 1, 2, 3

Medical Terminology

Medical Billing and Coding

Pharmacy for Medical Careers

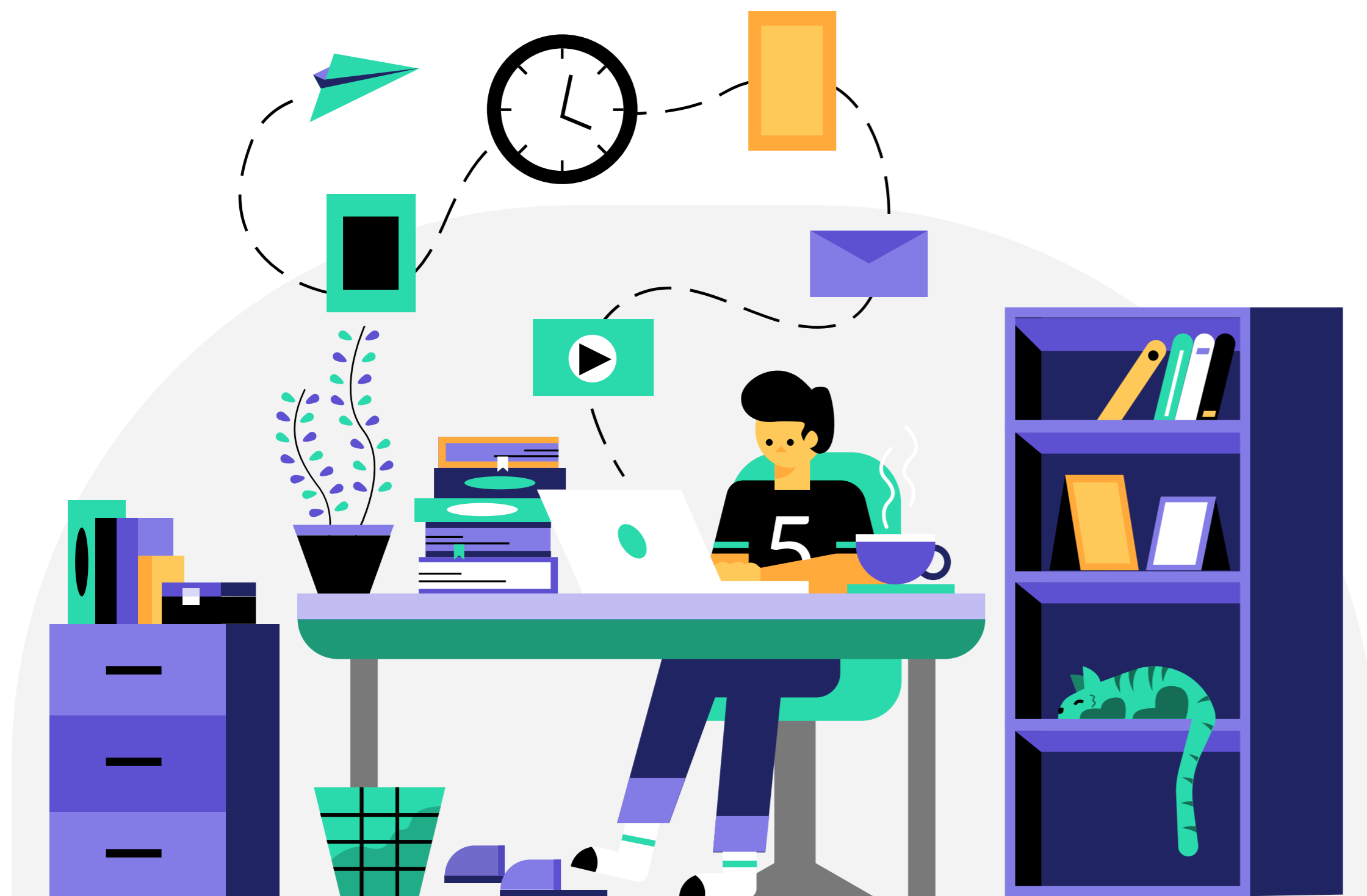
Middle School Course 1- Introduction to Health Professions

Middle School Course 2- Fundamentals of Healthcare

WHAT'S NEW IN HEALTH SCIENCE

Updated Standards in the Health Science Pathway

NEW Courses starting in 23 -24 School Year

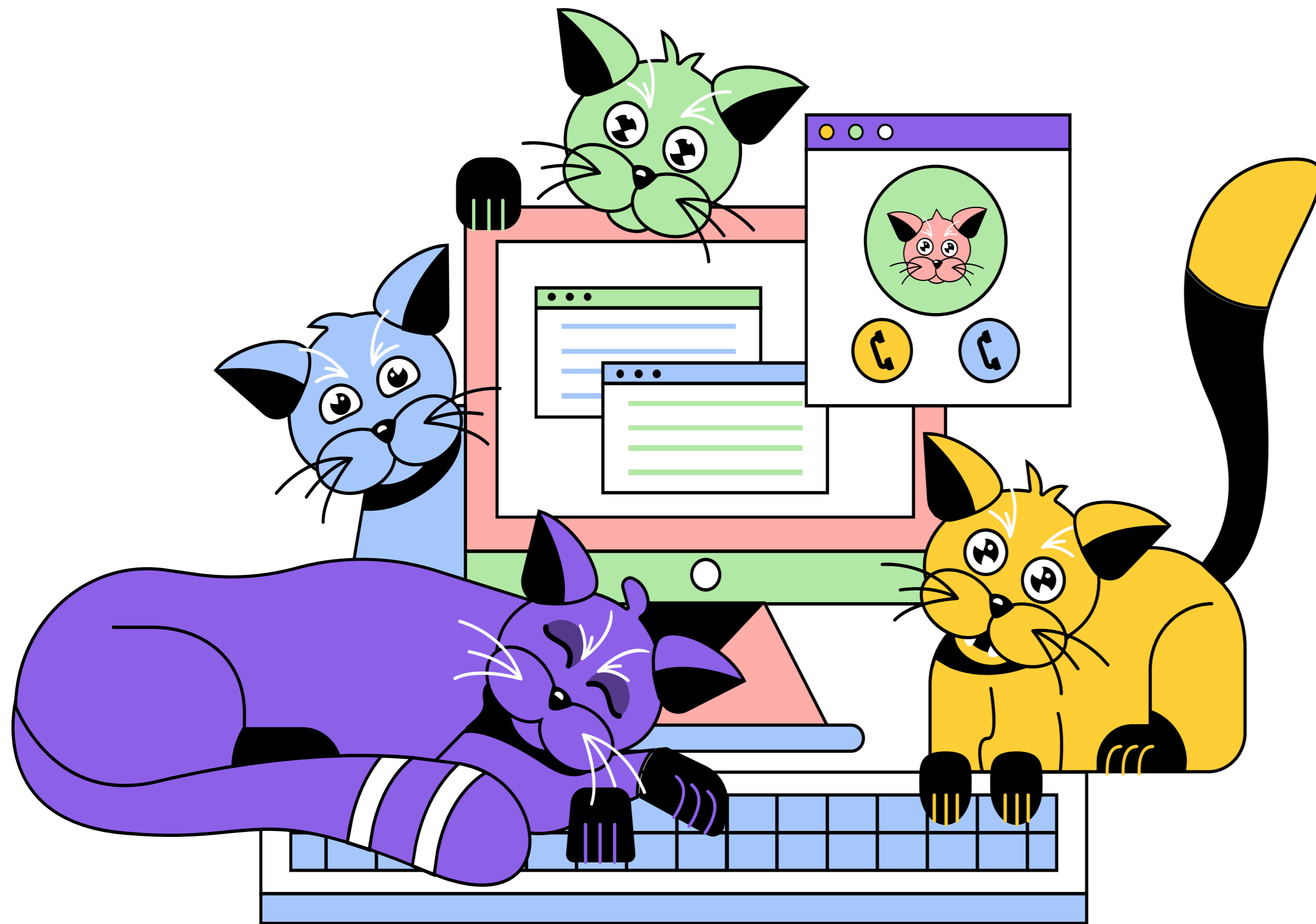


Introduction to Behavioral Health

Public Health Capstone and WBL to be posted this year.

WHAT'S NEW IN HEALTH SCIENCE

COURSES IN OTHER CLUSTERS THAT MAY BE COUNTED IN HEALTH SCIENCE COMPLETER PATH



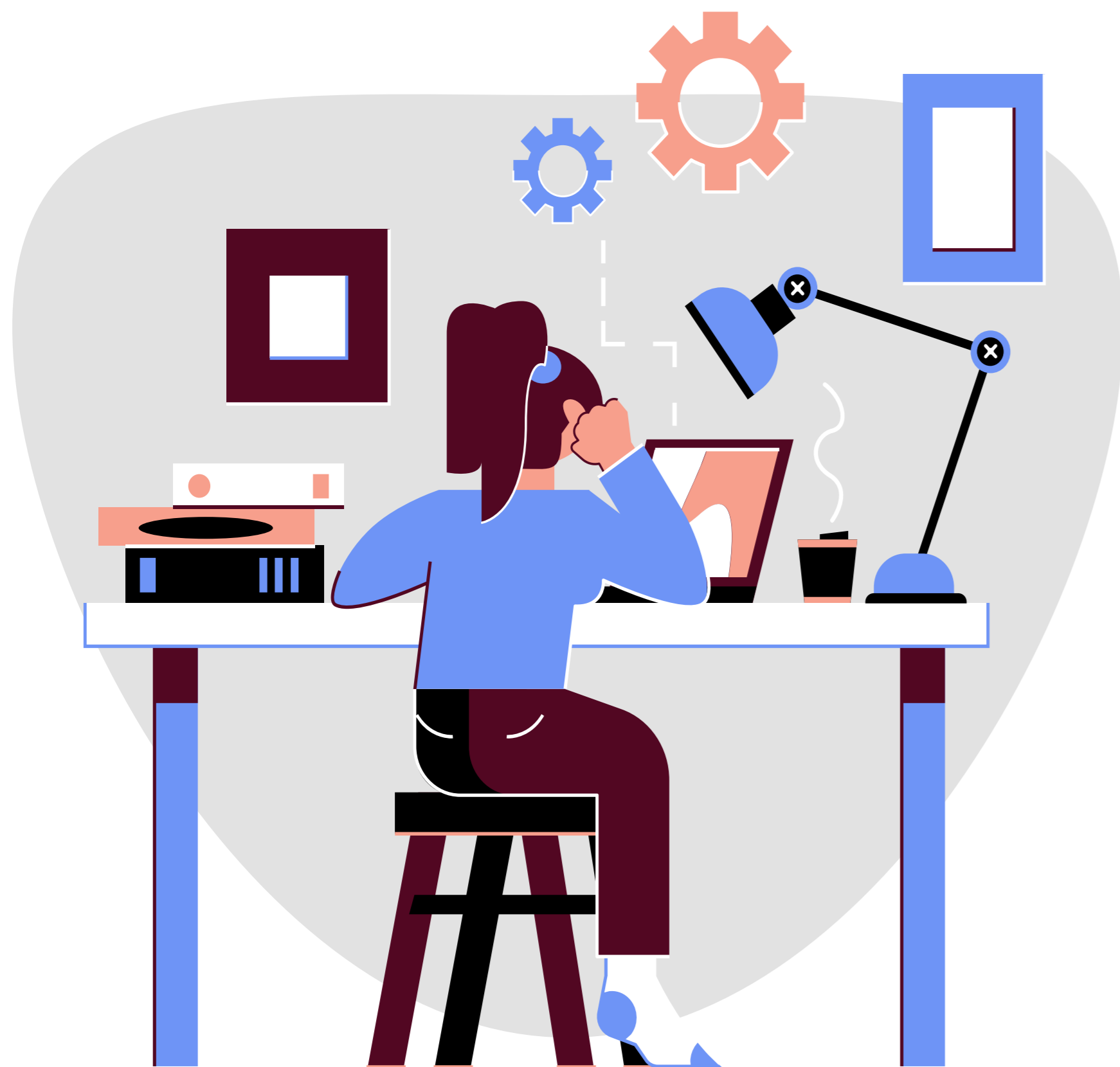
Ag – 5613 – Introduction to Veterinary Science may be counted as the 3rd or 4th unit in the Health Science completer pathway. Other pathways such Sports Medicine, EMS, or Biomedical Science, **are not** approved to use this course



FACS- 5760 Sports Nutrition may count as the 3rd or 4th unit in the Sports Medicine completer path. Other pathways are not approved to use this course.

CTE CONCENTRATOR

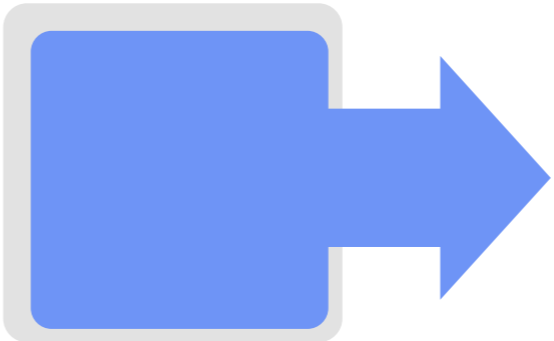
CTE CONCENTRATOR IS A STUDENT WHO HAS COMPLETED AT LEAST 2 COURSES IN A SINGLE CAREER AND TECHNICAL EDUCATION PROGRAM OR PROGRAM OF STUDY (USUALLY LEVEL 1 & 2)



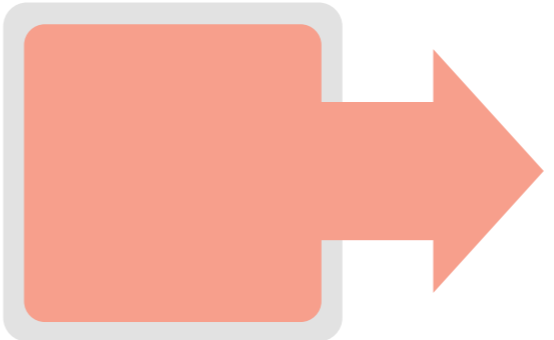
Note: Concentrators courses are bolded and designated by an asterisk (*) under course requirements in the Student Reporting Guide.

HEALTH SCIENCE CONCENTRATOR

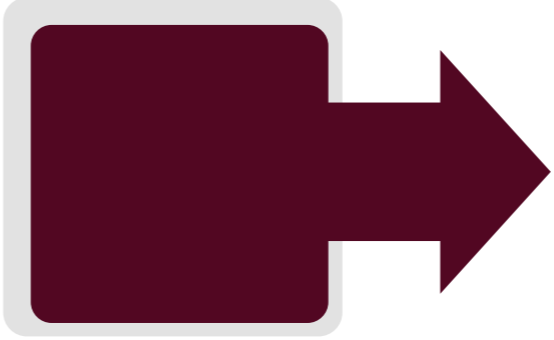
REQUIRED COURSES FOR EACH
PATHWAY TO BE A CONCENTRATOR



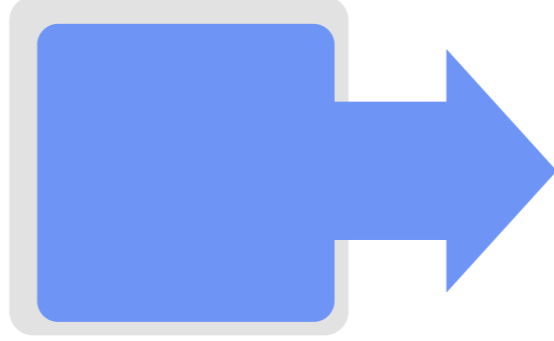
EMS Path – EMS 1 & EMS 2



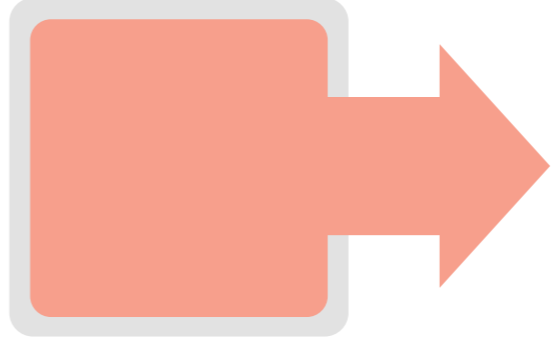
**Health Science Path –
HS 1 & HS 2**



**PLTW Biomedical Science
Path PBS & HBS**



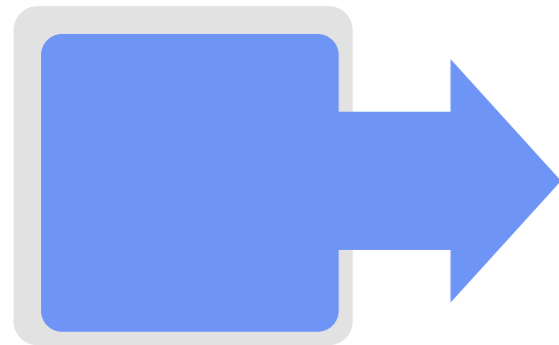
**Sports Medicine Path –
SM 1 & SM 2**



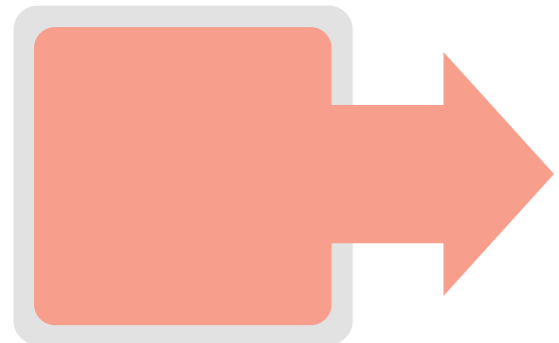
**Public Health – Foundations &
Advanced Principles**

HEALTH SCIENCE COMPLETER

3-UNIT/COURSE COMPLETERS

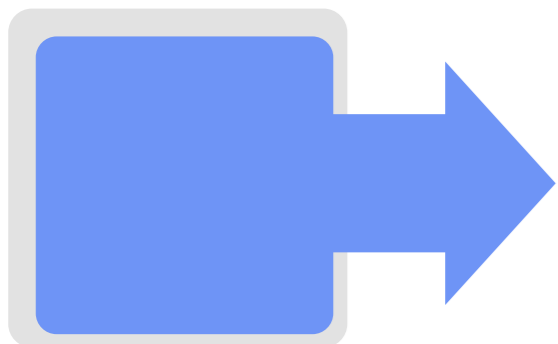


Must be a concentrator in one of the Health Science Pathways

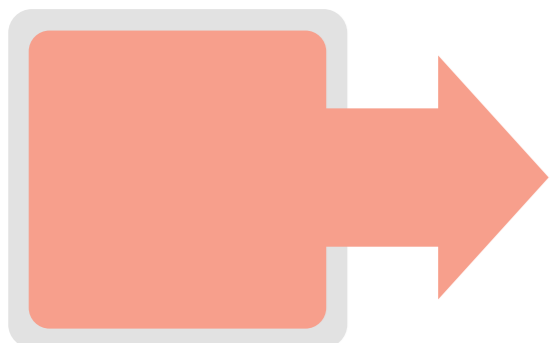


Must complete one other specific course tied to a 3-unit completer path.

ONLY FOR SPECIFIC PATHWAYS LISTED BELOW:



Sports Nutrition – *Only for SM pathway*



Introduction to Veterinary Science –
Only for HS pathway

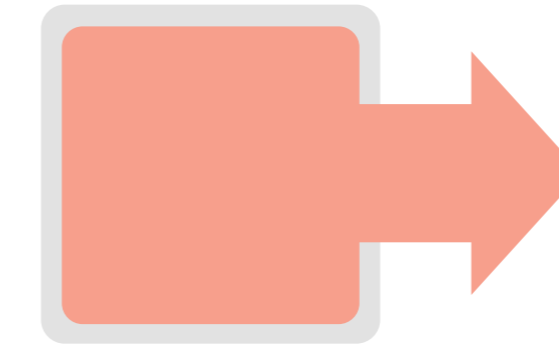
3RD UNIT CHOICES FOR ANY PATHWAY:



Medical Terminology



HS Human Structure, Function, and Disease



PLTW BMS – Human Body Systems



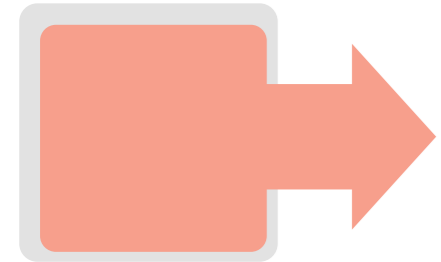
AHS 102 or 104 Dual Credit Courses

SAMPLE 3– UNIT COMPLETER PATHWAYS:

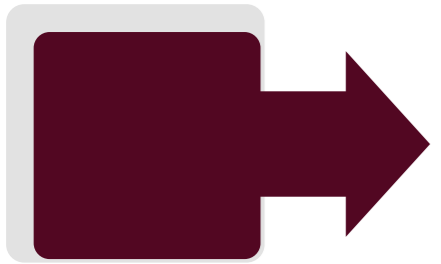


HEALTH SCIENCE

HS1, HS2, HS3 (or Med Term)



HS1, HS2, Science A& P and HS Clinical Studies



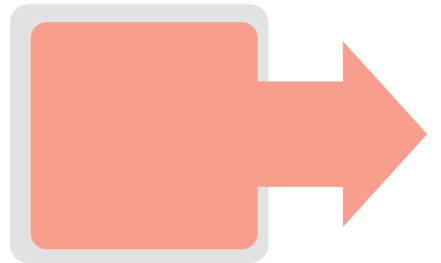
SPORTS MEDICINE

SM1, SM2, Med Term (or SM 3 or HS3 or SN)



PLTW - BMS

PBS, HBS, MI



PBS, HBS, Med Term



EMS

EMS1, EMS2, Med Term (or EMS 3, or HS 3 or the Dual Credit courses)



PUBLIC HEALTH

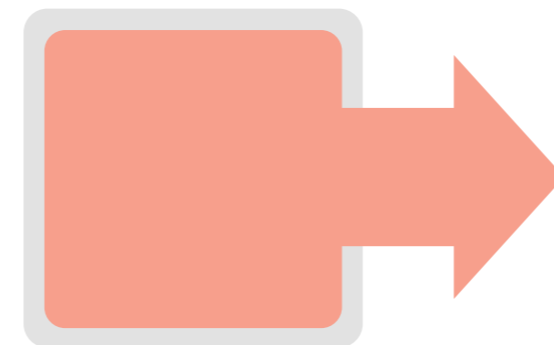
HS 1, PH Foundations, PH Advanced Principles

HEALTH SCIENCE COMPLETER

4- UNIT COMPLETERS:



Must be a concentrator in the one of the Health Science pathways



Must meet the 4 -unit credit by adding two more units if needed from any course in the Health Science cluster that the student is ***eligible for or has met the pre-requisites to take***



SOMETHING TO NOTE – COMPLETERS

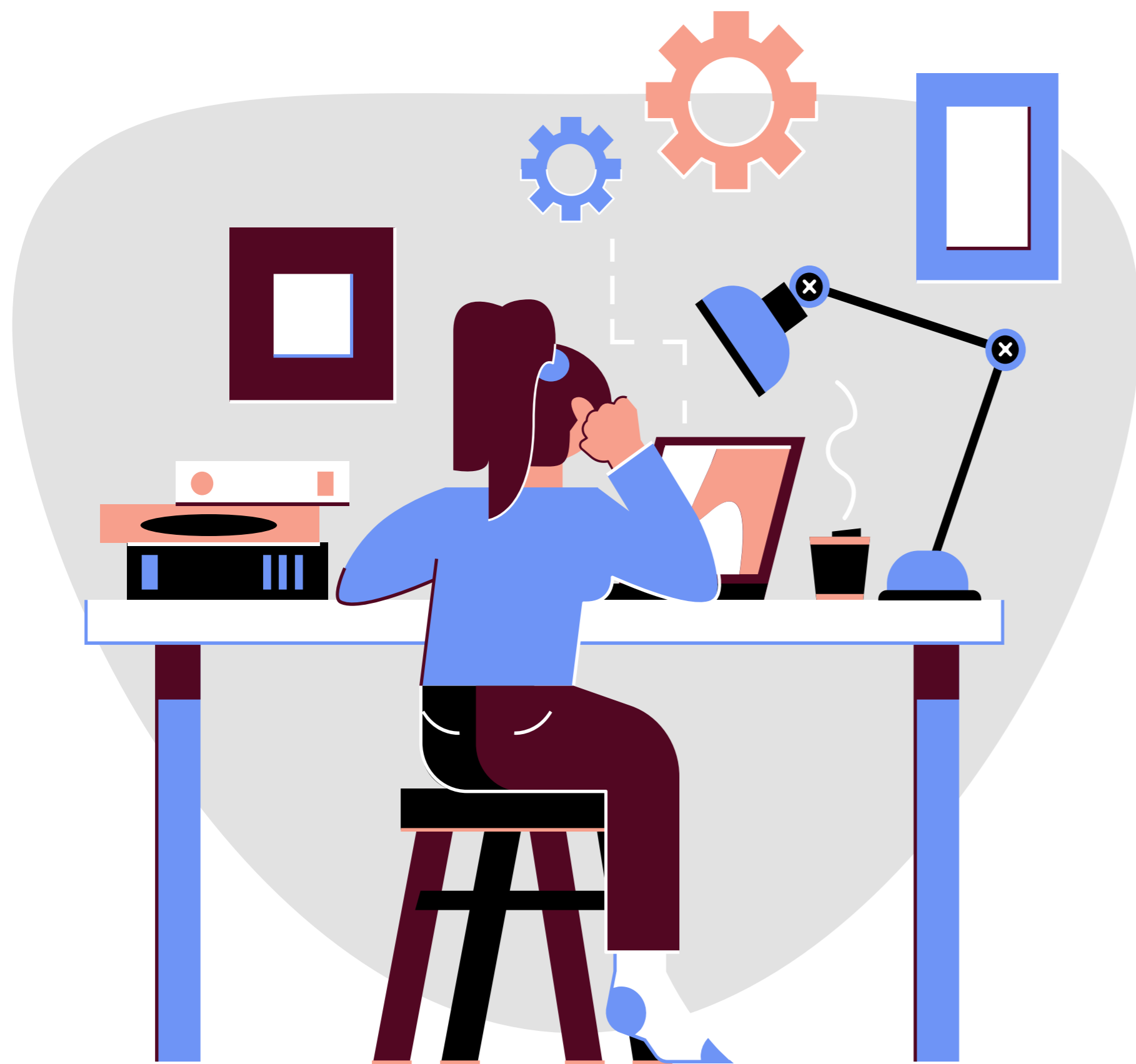
ONCE A STUDENT IS A COMPLETER IN ANY HEALTH SCIENCE PATHWAY THEY MAY SIGN UP TO TAKE HEALTH SCIENCE CLINICAL STUDY.

THE ONLY WAY A NON-COMPLETER CAN SIGN UP TO TAKE HEALTH SCIENCE CLINICAL STUDY IS BY BEING A CONCENTRATOR IN ANY HEALTH SCIENCE PATH PLUS TAKING SCIENCE DEPARTMENT A & P OR AP BIOLOGY.

BEING A COMPLETER, OR A CONCENTRATOR WITH A& P, IS A PRE-REQUISITE TO HEALTH SCIENCE CLINICAL STUDY

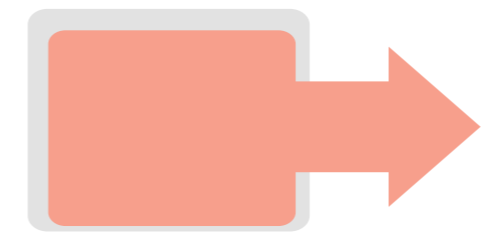
MIDDLE SCHOOL

INTRODUCTION TO HEALTH PROFESSIONS 2839 (7TH & 8TH)
FUNDAMENTALS OF HEALTHCARE 2791 (8TH GRADE ONLY)



May be taught by:

Middle School Health Teachers



Middle School Health Teachers

AND



High School Health Science Teachers
(with Proviso in effect)

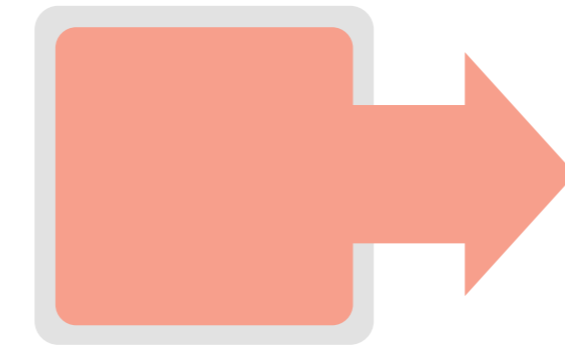
INDUSTRY RECOGNIZED CREDENTIALS

WHERE DO WE FIND APPROVED CREDENTIALS?

TWO PLACES:



Student Reporting Procedures Guide (SRPG)



Career and Technology Program Page

HAVE A CREDENTIAL/CERTIFICATION THAT YOU WOULD LIKE TO SEE ADDED?



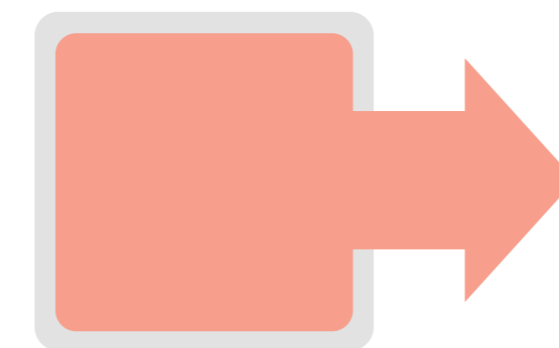
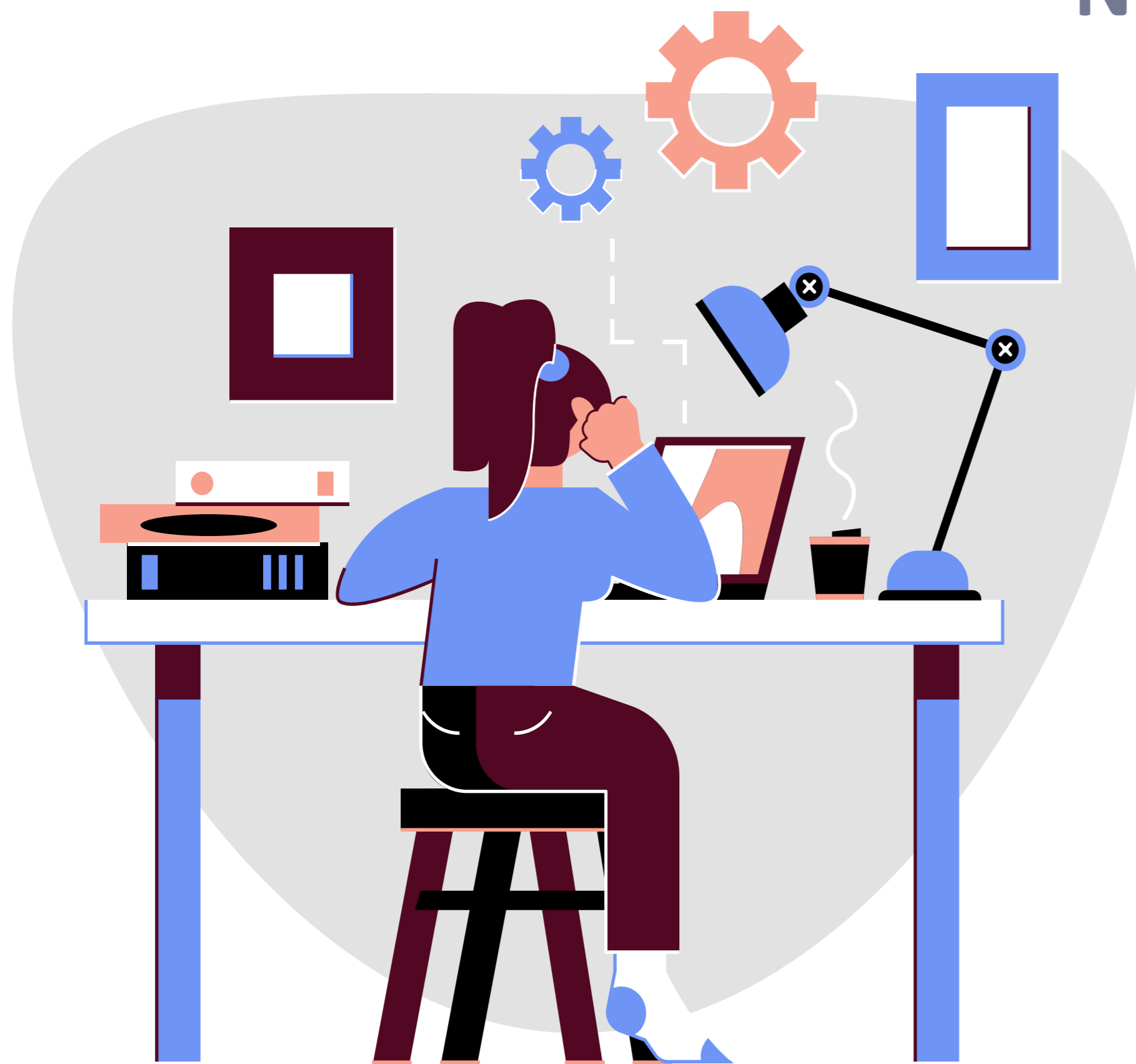
Submit the form below
[Industry Certification Form \(sc.gov\)](#)



INDUSTRY RECOGNIZED CREDENTIALS

SO HAVE YOU HEARD ABOUT THE TIERED SYSTEM THAT IS SET TO BEGIN ONCE IT HAS BEEN APPROVED?

NO DATE HAS BEEN SET FOR THIS TO BEGIN



Specific credentials will be linked to a specific course or level within a pathway.

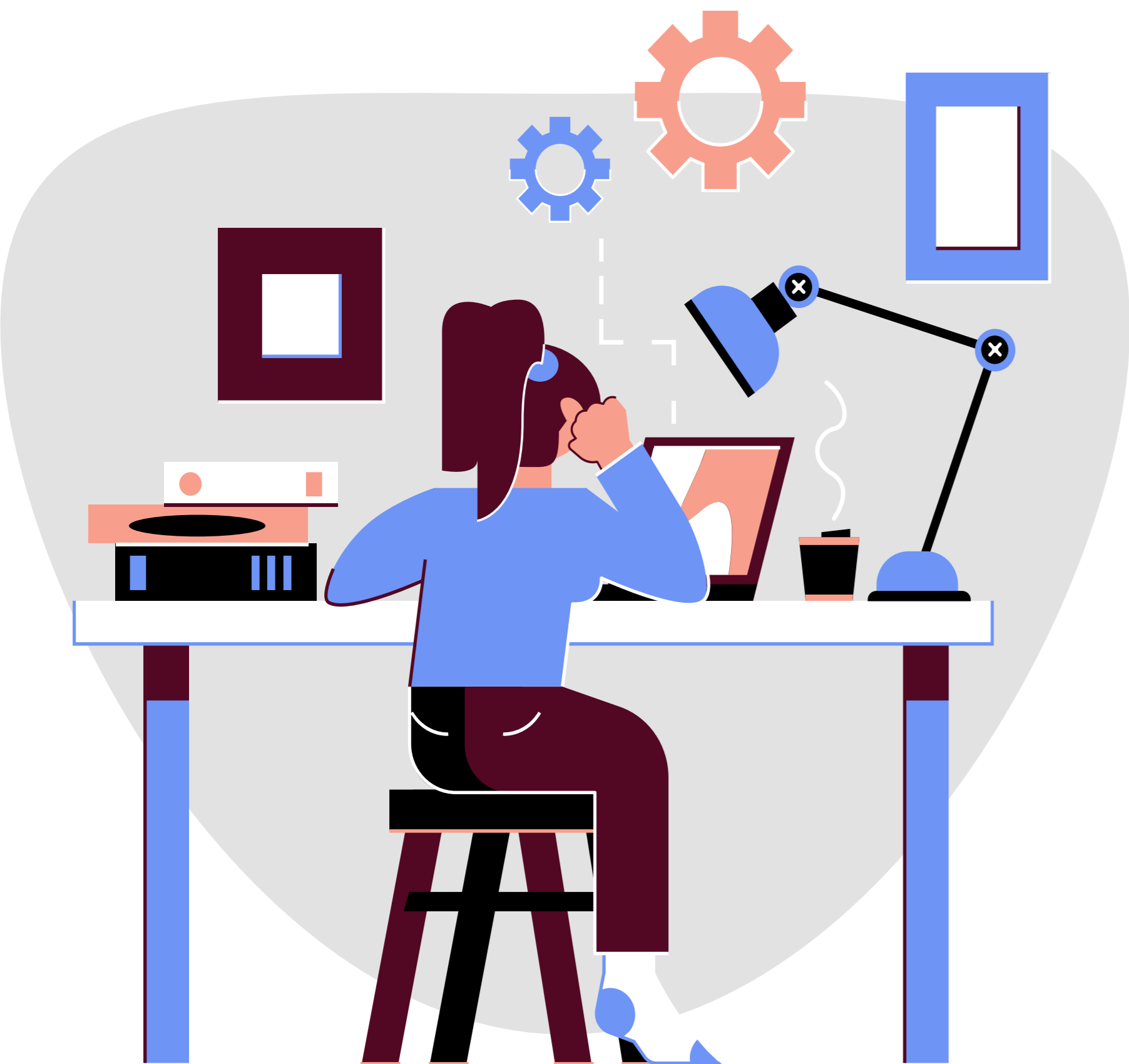
HAVE A CREDENTIAL/CERTIFICATION THAT YOU WOULD LIKE TO SEE ADDED?



Submit the form below
[Industry Certification Form \(sc.gov\)](#)

EXAMPLES OF STACKABLE CREDENTIALS THAT MAY BE REQUIRED AS PART OF A COURSE STANDARD

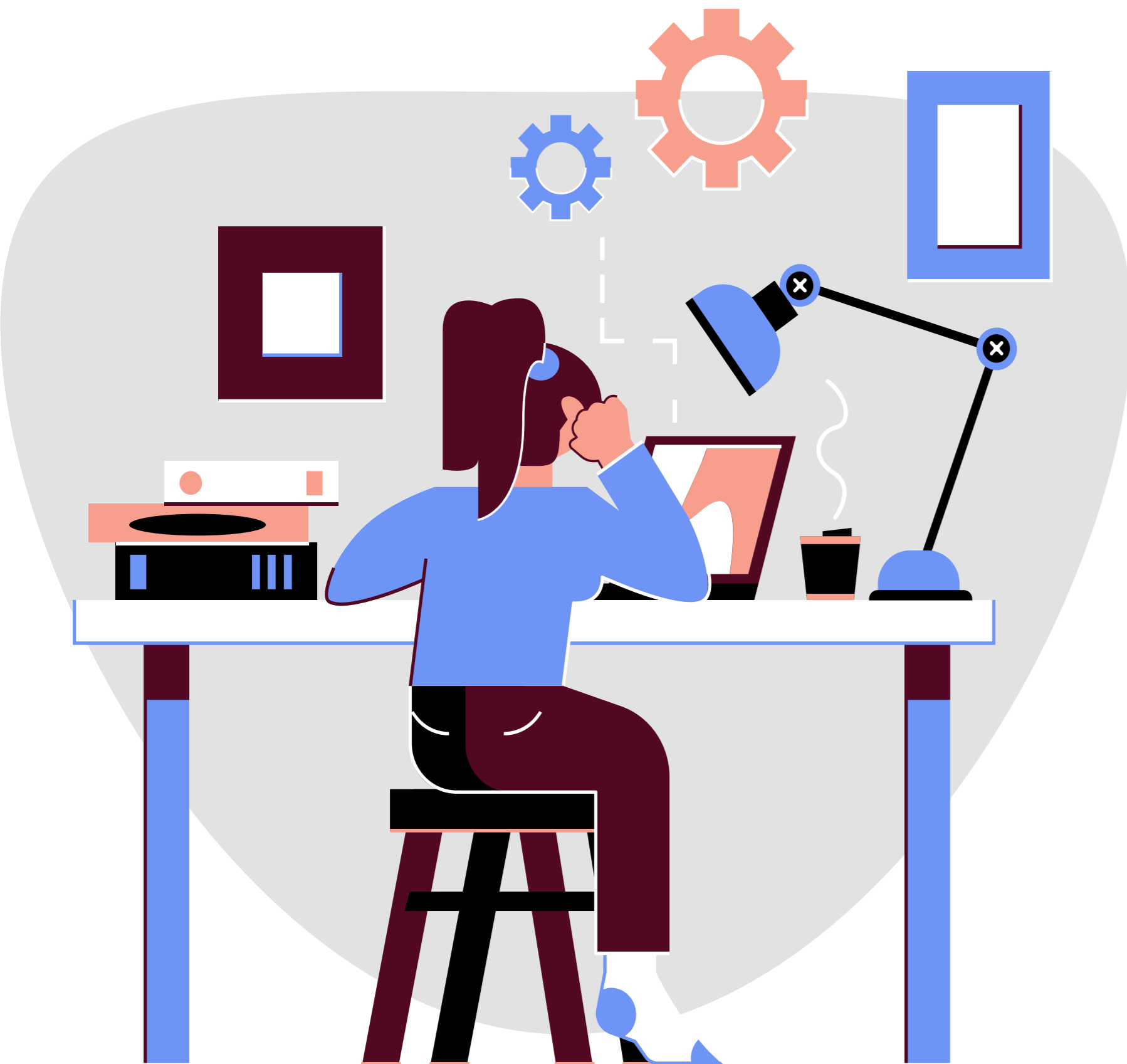
- **FIRST AID**
- **HEARTSAVER CPR/AED**
- **COMMUNITY EMERGENCY RESPONSE TEAM (CERT)**
- **HEADS UP: CONCUSSION IN YOUTH SPORTS**
- **NFHS: HEAT ILLNESS PREVENTION**
- **NFHS: CONCUSSIONS IN SPORTS**
- **NFHS: SUDDEN CARDIAC ARREST**
- **NFHS: NUTRITION**
- **COMMUNITY EMERGENCY RESPONSE TEAM – CERT**
- **PAID FEEDING ASSISTANT – PFA**
- **STOP THE BLEED**
- **FAST – FIRST AID FOR SEVERE TRAUMA**
- **HIPAA**



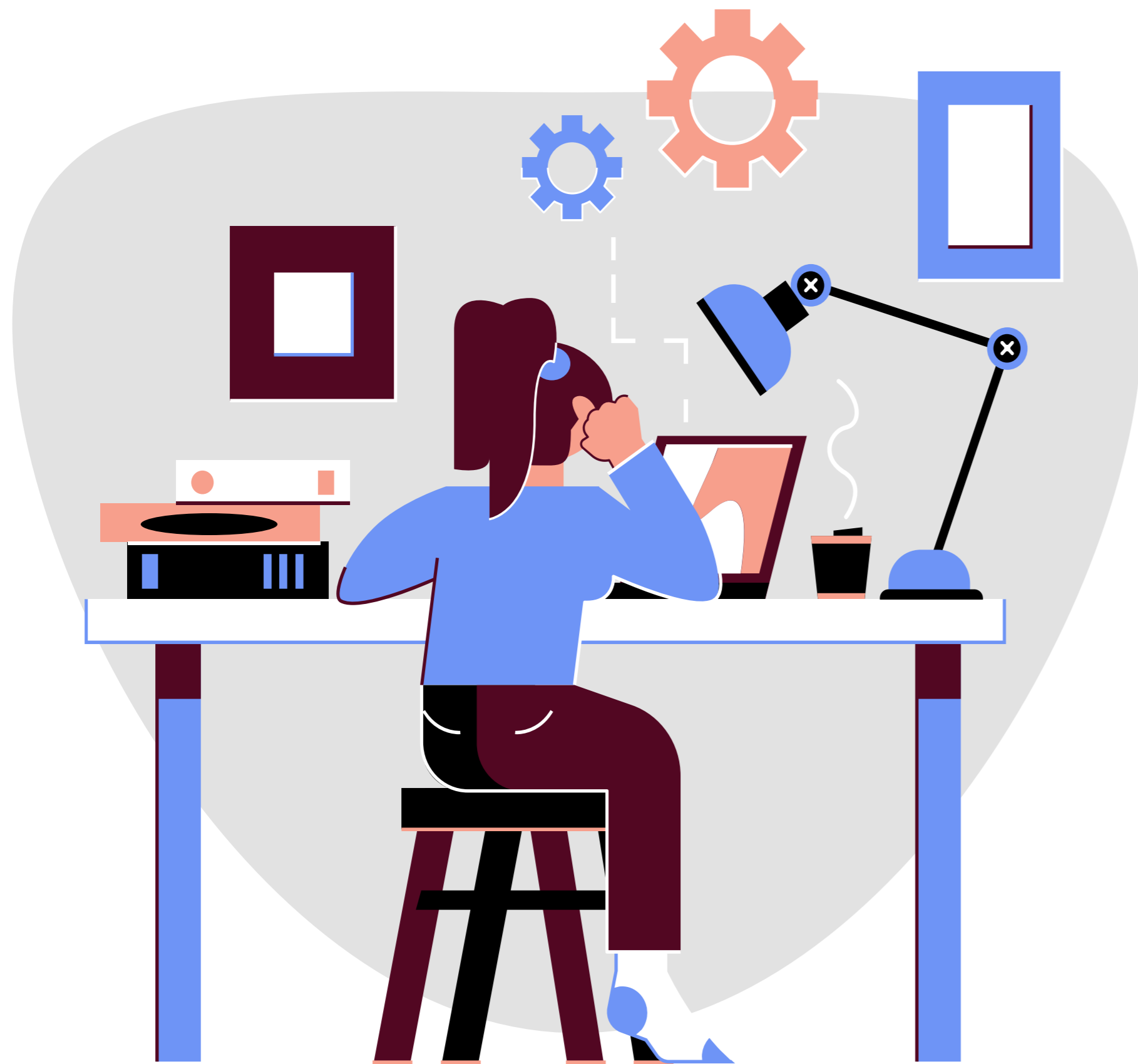
EXAMPLES OF INDUSTRY RECOGNIZED CREDENTIALS THAT MAY BE REQUIRED OR OPTIONAL AS PART OF A COURSE

- PHARMACY TECHNICIAN
- EKG TECHNICIAN
- DIRECT SUPPORT PROFESSIONAL
- PHYSICAL THERAPY AIDE
- EMT
- MEDICAL ASSISTING
- PATIENT CARE TECHNICIAN
- PHLEBOTOMIST
- NURSE AIDE

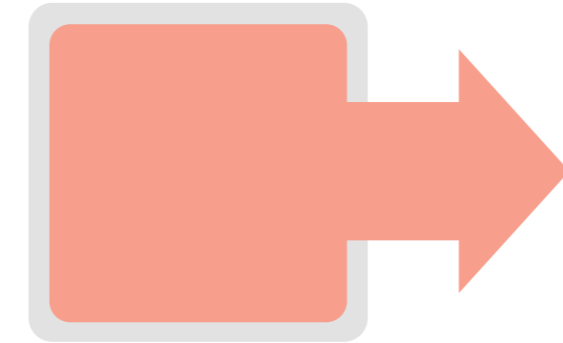
ETC...



SCDE - SC VIRTUAL SCHOOL COURSE OFFERINGS



Health Science 1

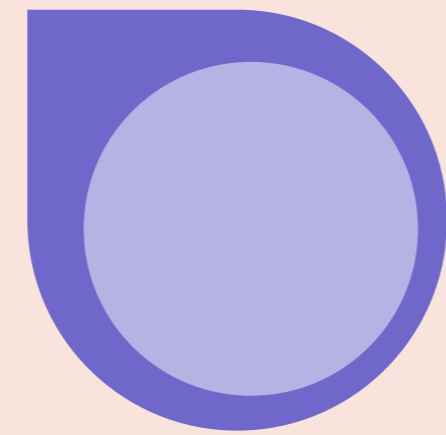


Medical Terminology



Health Science - Human
Structure, Function & Disease
(HS3)

WHAT'S NEW WITH NURSE AIDE



CNA Training and Certification

Classroom Instruction and Distance Education Learning
SCDHHS will continue to allow CNA training programs to offer distance education learning once the federal PHE has expired. Classroom instruction, whether face-to-face or through distance education learning, still must equal the required 60 hours unless requirements for TNAs are met as above.



Clinical Instruction

SCDHHS will continue to allow CNA candidates to receive clinical skills training in a health care facility under the direction of an RN after the federal PHE has expired. However, SCDHHS will discontinue the option for clinical skills training to be provided in a simulation environment effective as of the end of the federal PHE. Skills training must equal the required 40 hours. Hours worked as a TNA in a health care facility under the direction of an RN can count toward the 40 hours of clinical skills training.



NURSE AIDE INFORMATION

WHO SHOULD YOU HIRE?



Primary Instructor (RN) experience- must possess a minimum of two (2) years RN nursing experience, to include at least one (1) year in the provision in long term care nursing services.

This is the only instructor that you will need to submit the following information:

- Current Sled report <5 years
- resume experience
- RN license #



Supplemental instructors working under the Primary Instructor (RN) must be a licensed RN or LPN and have at least one (1) year of experience in caring for the elderly or chronically ill of any age.

SC nurse aide website: <https://credentia.com/test-takers/sc>

SC nurse aide registry search:

<https://cna365.examroom.ai/registry/?StateCode=SC>

If you have any additional questions, feel free to contact SCDHHS email at SCNAR@scdhhs.gov

Vaccinations – COVID, FLU, etc. – Requirements are up to the clinical site.



NURSE AIDE

For all inquiries about nurse aide certification please contact
SC Department of Health and Human Services

Division of Long -Term Living, 7th Floor

PO Box 8206

Columbia, SC 29202

Phone: 803-898-2590

Fax: 803-255-8290

Email: scnar@scdhhs.gov



ALTERNATE CERTIFICATIONS

CHECK THE STUDENT REPORTING GUIDE AS WELL AS THE LIST CONTAINED WITHIN THE CLINICAL STUDY COURSE.
TWO OPTIONS ARE:



PCT or Patient Care Technician includes nursing assistant skills as well as other skills.



CCMA or Certified Clinical Medical Assistant a lot of hands- on patient clinical skills.

Several vendors may offer these certifications.

NHA is the most used vendor for these certifications in SC.
They offer great support.

CONTACT:

National Healthcareer Association- NHA

<https://www.nhanow.com/>

Jennifer McWilliams: Jennifer.mcwilliams@nhanow.com

Tammy Stine: tammy.stine@nhanow.com

Phone: 913-225-5869



AGAIN, CHECK THE STUDENT REPORTING GUIDE



PLTW BMS – Stop the bleed, Precision Exam, BLS, EKG Technician, BACE, etc.



SM – Stop the bleed, Precision Exams, FA, BLS, OSHA 10, EKG Technician, Physical Therapy Aide, Personal Trainer, etc.



HS – FA, CPR/BLS, Precision Exams, NHSC, Paid Feeding Assistant, Electronic Health Record Technician, OSHA, Phlebotomy, PCT, DSP, CMAA, etc.



PH – FA, CPR/BLS, OSHA, CDC certifications, NCIPH training sites, Train, etc.

WHAT'S NEW IN ASSESSMENTS

NATIONAL HEALTH SCIENCE ASSESSMENT (NHSA)



Cost of Pre-Test and Post- Test has gone up to \$15 per student for SC (member state)



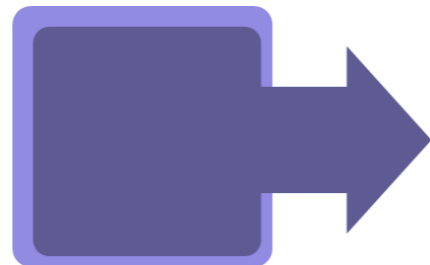
Currently SCDE and SCHA are covering the cost of the POST – Test ONE TIME



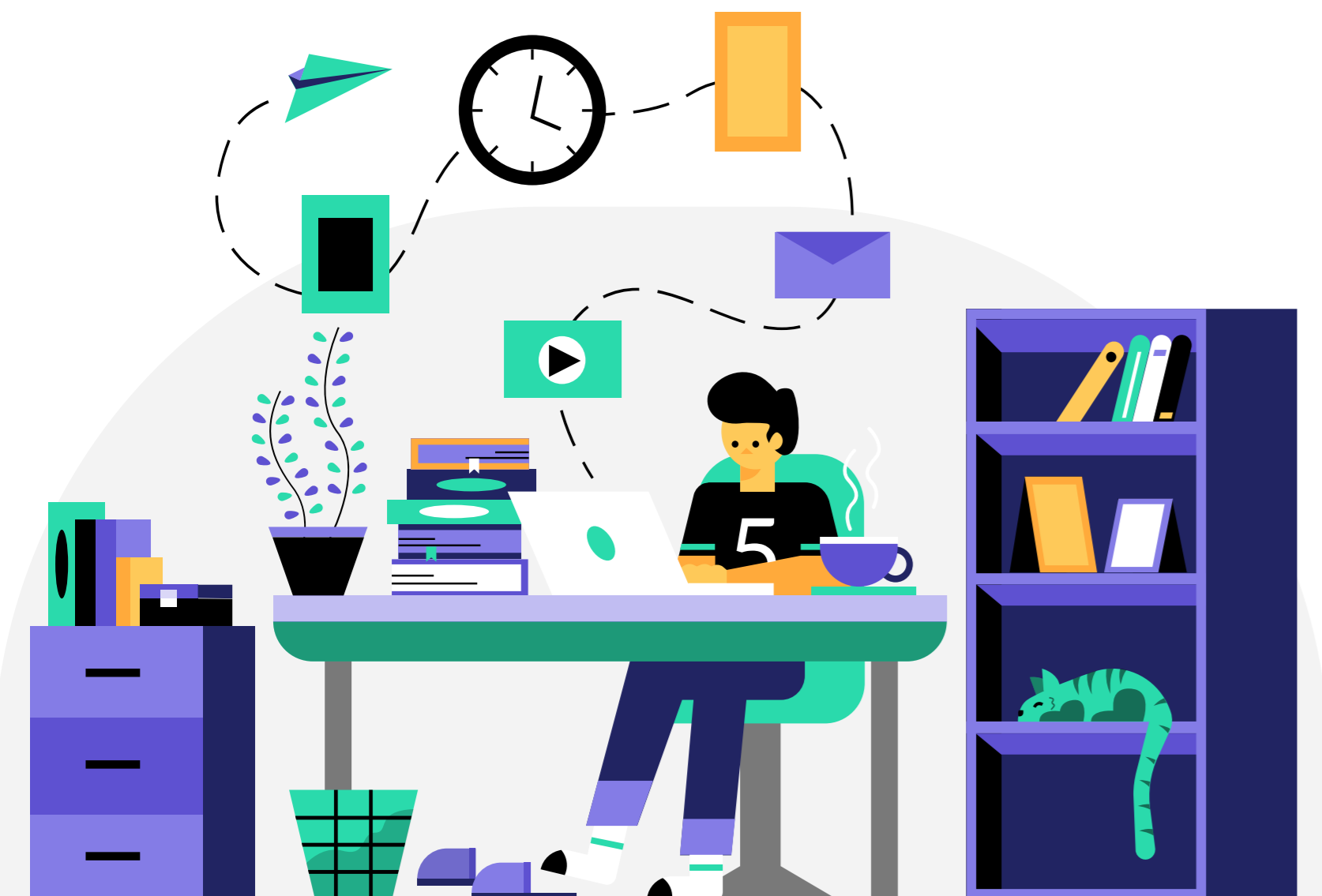
SCDE does NOT cover the pre-test.
[Career and Technical Education Technical Skill Assessments](#)



Visit the SCDE page above for details and instructions on the assessment



Contact Ivey Harrison at YouScience directly with any specific questions regarding the exam .
Ivey Harrison ivey.harrison@youscience.com



WHAT'S NEW IN ASSESSMENTS

NATIONAL HEALTH SCIENCE ASSESSMENT (NHSA) POST- TEST-END OF PROGRAM CERTIFICATE



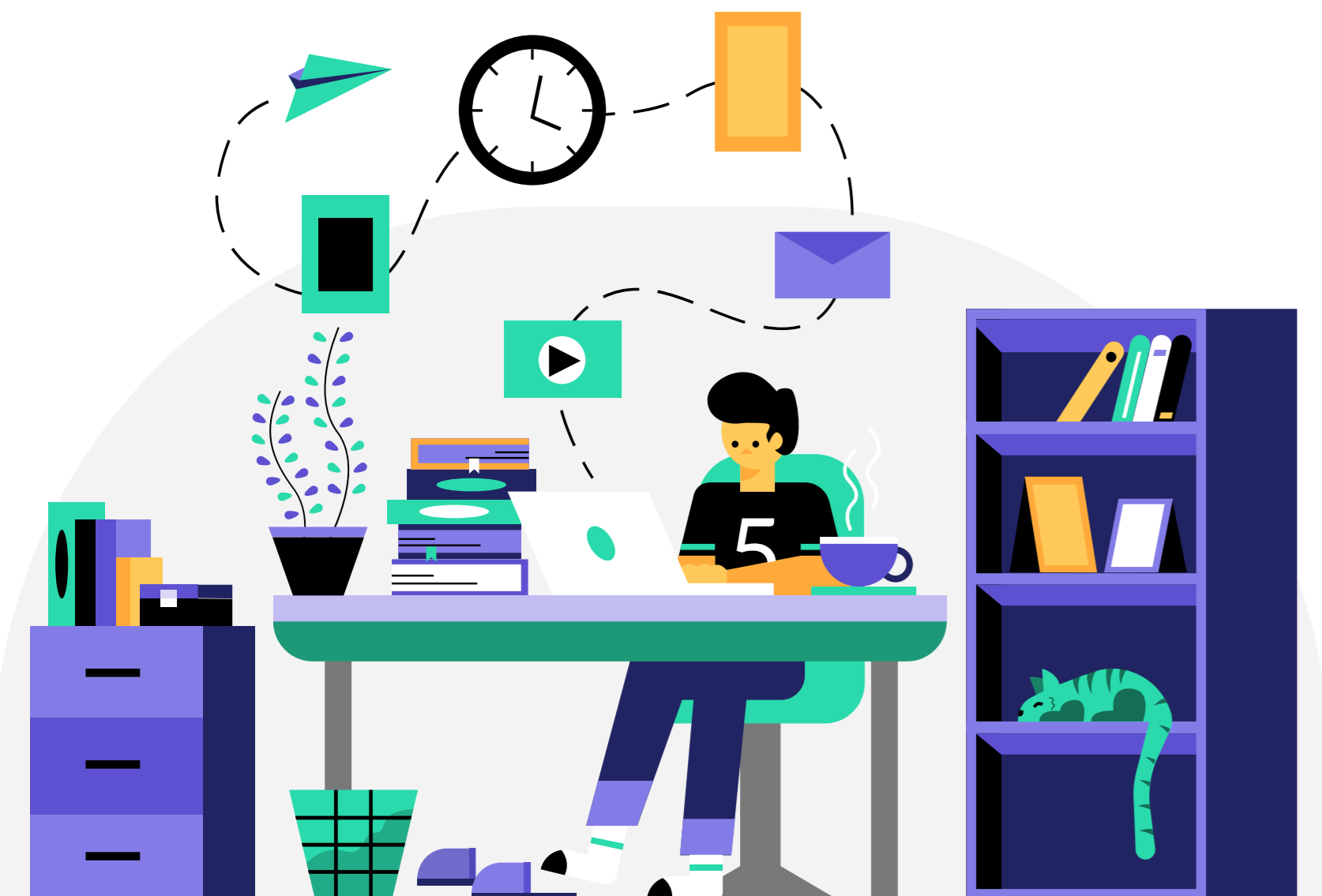
Number of questions on the assessment has increased to 108 (possible 116 points – to score 100)



The testing content and percentages will be available on NCHSE website



This increases the passing score to 82 which is 70% of 116



WHAT'S NEW IN ASSESSMENTS

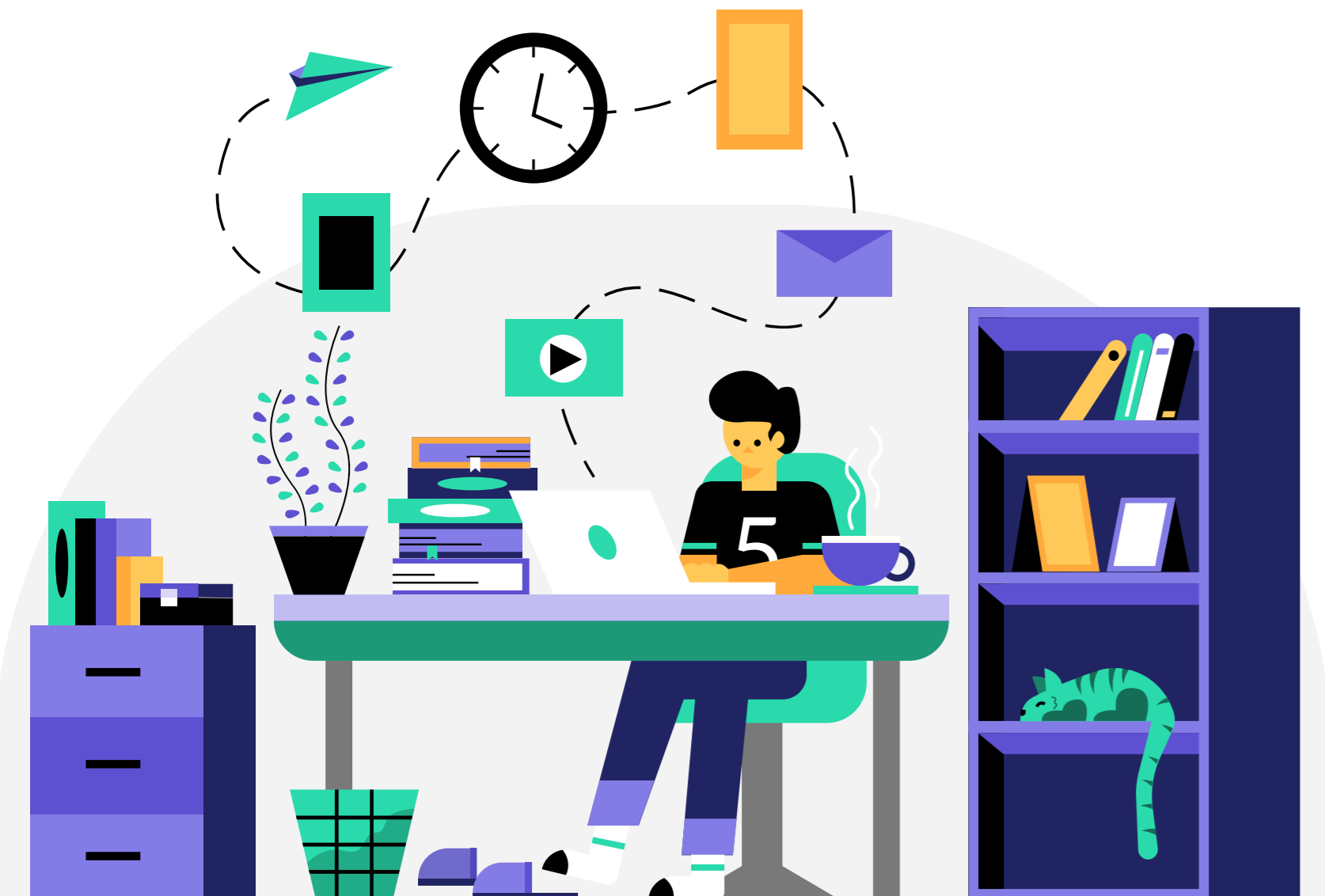
WHO SHOULD TAKE THE NHSC POST-ASSESSMENT?



Students who are more successful and best suited to take the exam, are completers in the health science pathway. (HS 1, HS 2, HS 3 or Med Term, and/or HS Clinical Study)



Other paths such as EMS, Biomedical Science, Public Health and Sports Medicine are eligible to take the assessment as well once they are completers in their program area.



ASSESSMENTS

END OF PROGRAM TESTING – FOR COMPLETERS



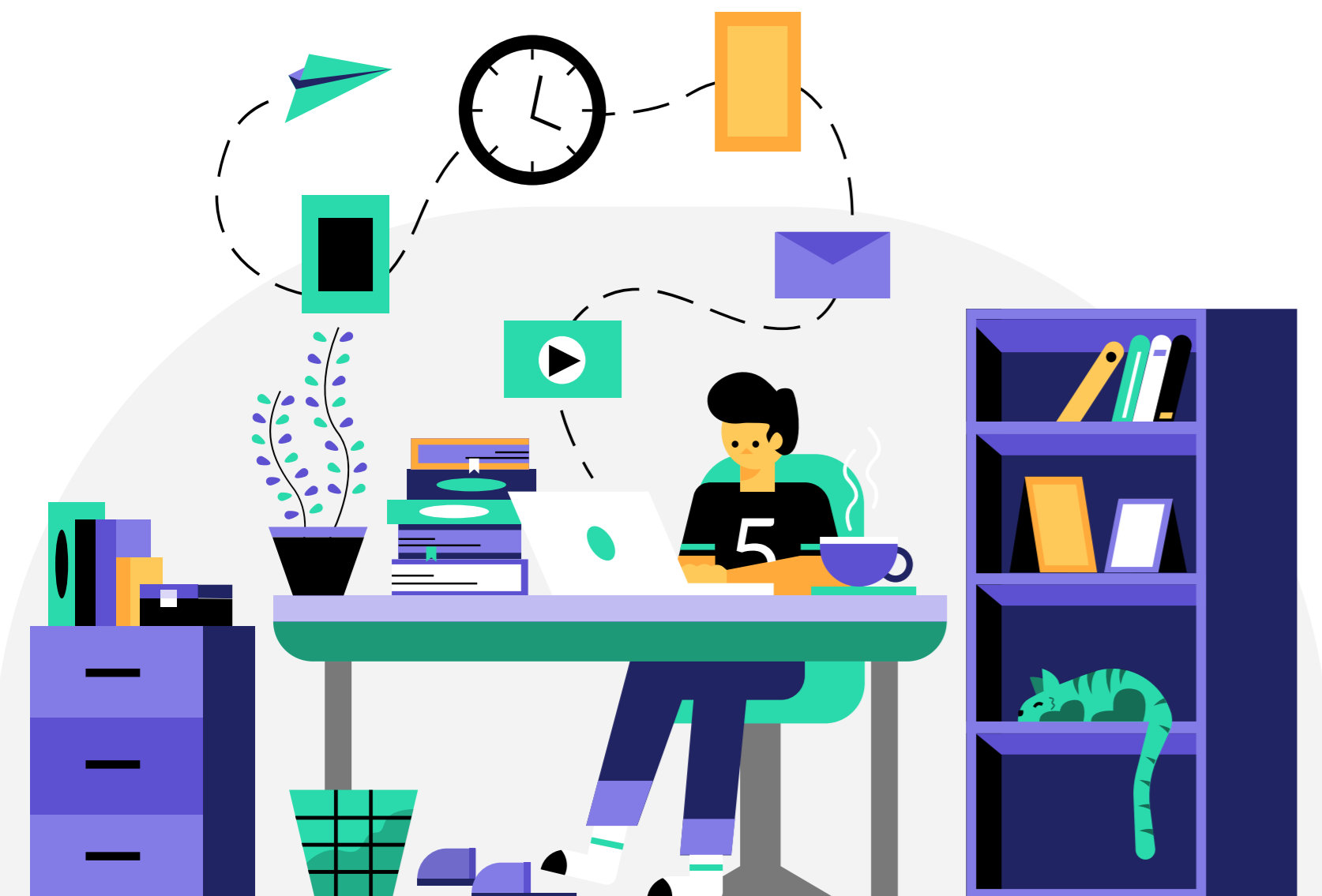
Submit test names to your administrator for fall testing by **October 1st** and for spring testing **March 1st**.



SCDE Assessment information:
[Career and Technical Education Technical Skill Assessments](#)



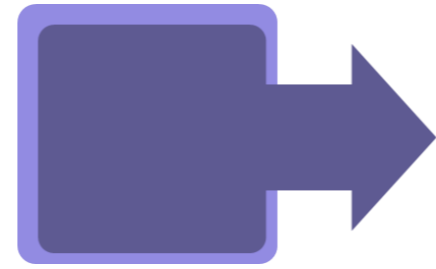
NCHSE EOP Assessment info
[National Health Science Certificate – NCHSE Website](#)



WHAT'S NEW IN ASSESSMENTS



YouScience offers a multitude of other assessments



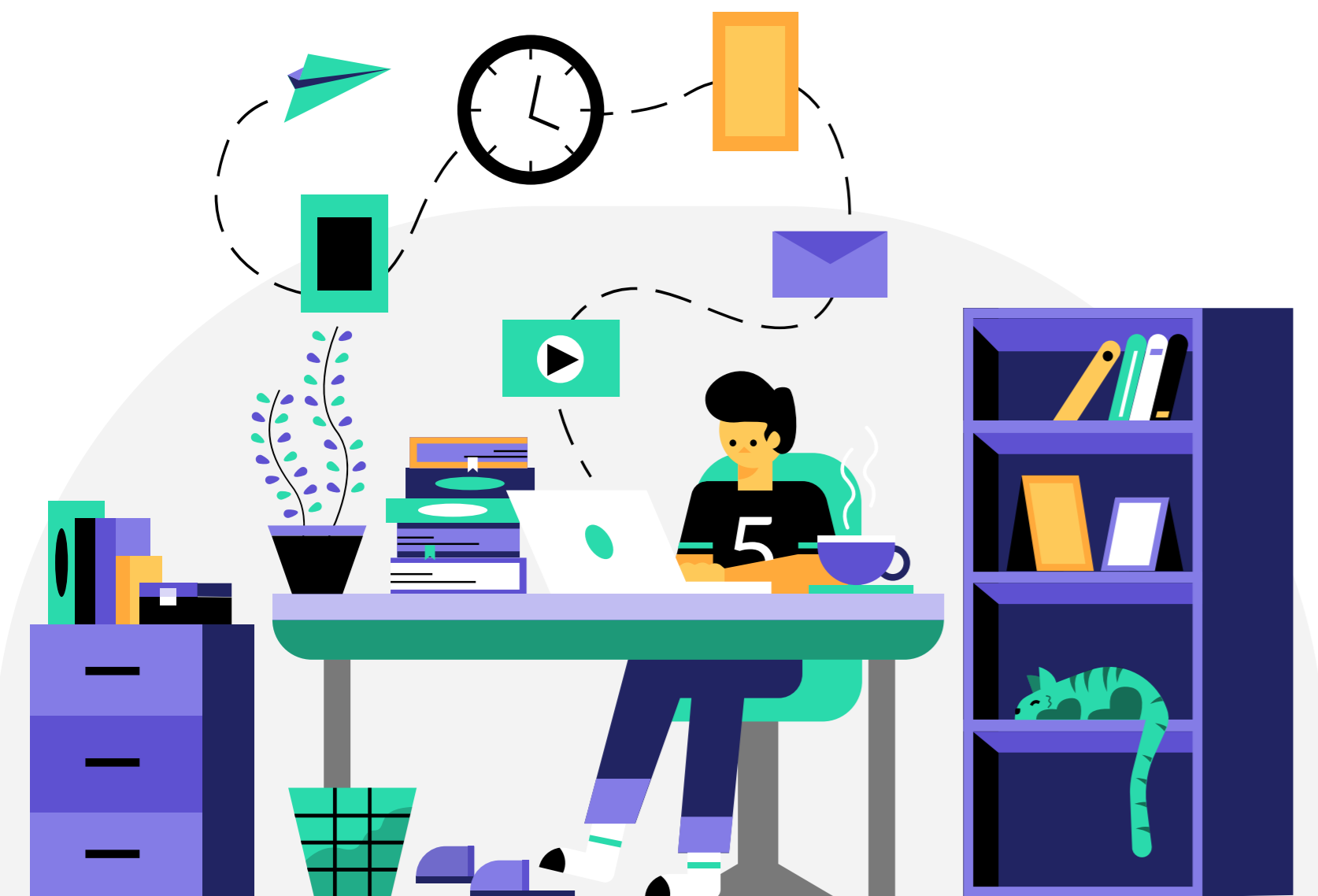
Approximately 17 are approved in the Health Science Area



These assessments are stackable credentials and are course level assessments



YouScience also offers a site license – details to be shared later in this webinar

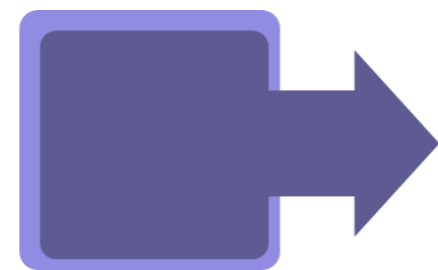


DUAL CREDIT



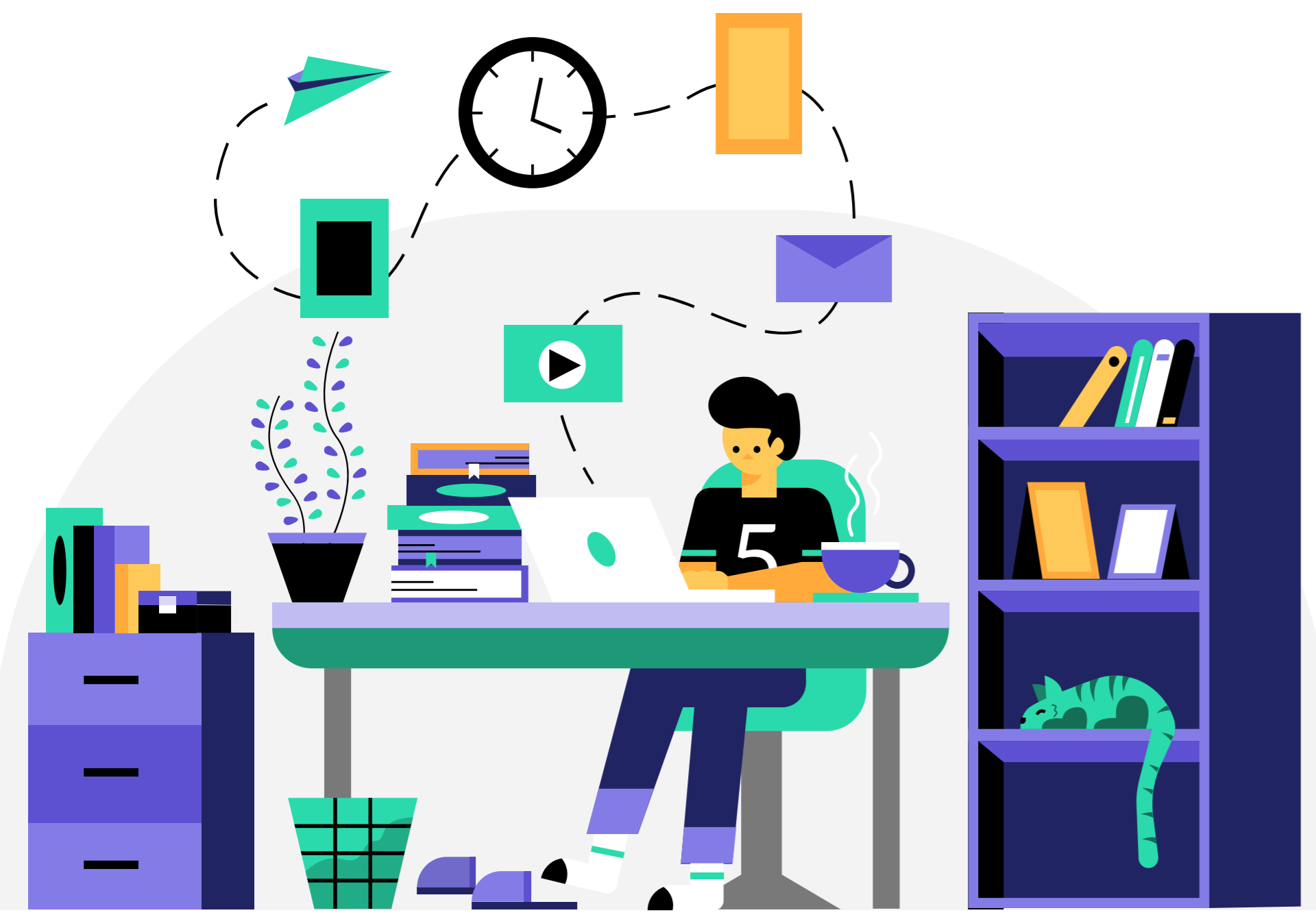
Dual credit CTE guidelines

<https://ed.sc.gov/instruction/career-and-technical-education/programs-and-courses/cate-programs/2021-22-dual-credit-guidelines/>



Dual credit application

<https://ed.sc.gov/instruction/career-and-technical-education/programs-and-courses/cate-programs/dual-credit-checklist-and-application>



HEALTH SCIENCE RESOURCES



For foundational standards, priority standards, program updates, and additional resources please visit the Health Science link on the SCDE website: [Health Science Standards Webpage](#)



SC Health Science Resources:
<http://www.schosa.org/health-science/>



SC Remote Learning – CTE Resources:
<https://scremotelearning.com/teachers/career-and-technical-education/>



Instruction Hub: [Instruction Hub](#)



thank:
- you

CONTACT INFORMATION

ANGEL CLARK, MSN, RN

SCDE EDUCATION ASSOCIATE

HEALTH SCIENCE EDUCATION

1429 SENATE STREET

Rm. 918-A

COLUMBIA, SC 29201

PHONE: (803) 734-0372

EMAIL: ACLARK@ED.SC.GOV

SC ACTE HSE DIVISION REPORT

PRESIDENT:

MELISSA MURRAY

STRATFORD HIGH SCHOOL



South Carolina
**Health Science
Educators**

SC ACTE HSE DIVISION

 President
Melissa Murray- Stratford High School

 Immediate Past President
Karen Edwards- Chapin High School

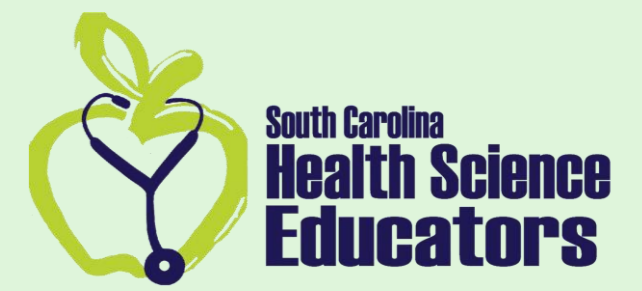
 President Elect
Anna Snipes- Lancaster County School District Career Center

 Secretary
Jeremy McMichael- Irmo High School

 Treasurer
Amanda Bolin- Cyber Academy, SC

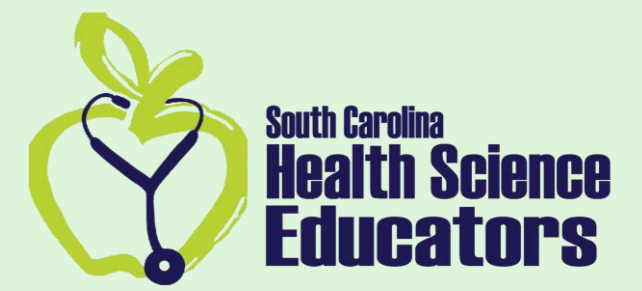
 Reporter
Angel Clark- SC Department of Education

WHY JOIN SC ACTE – HSE



-  Offer a collective, strong voice
-  Access to relevant and current information
-  Recognition of profession
-  Provider of professional development
-  Network with experts across the state
-  Liability Insurance
-  Be part of your professional group
-  Access to more resources and updated drive

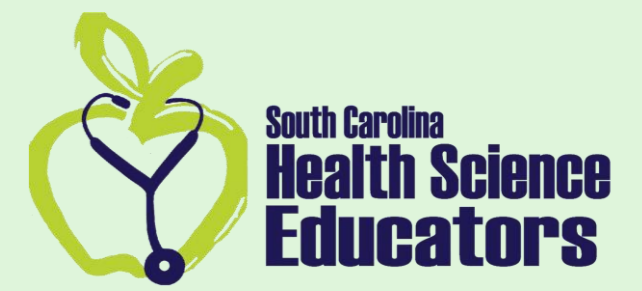
WHY JOIN SC ACTE – HSE



SC HSE membership lasts from the month that you join for a year until that month rolls back around next year.

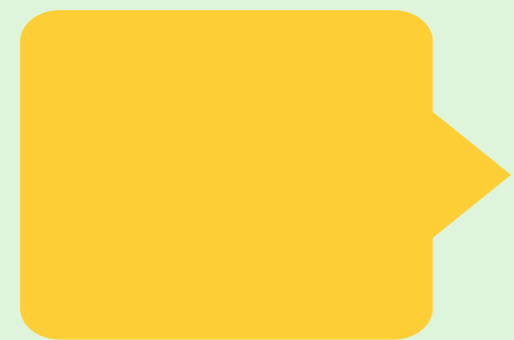
For State membership to ACTE it is \$65 and for Health Science Division it is \$10
For a total of \$75.00
[Home \(scacte.com\)](http://scacte.com)

NOMINATED FOR REGION II AWARDS



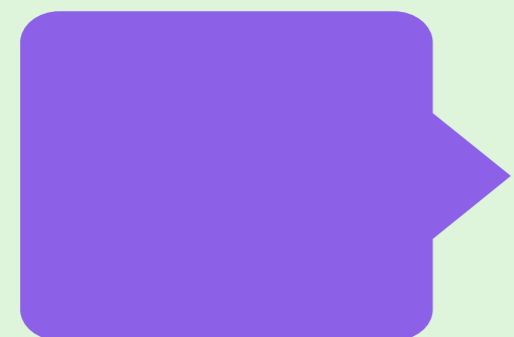
Teacher of the Year

Anna Snipes – Lancaster County School District Career Center–



Teacher Educator of the Year

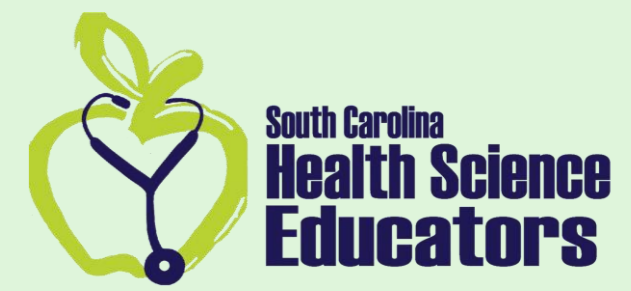
Stacie Elwood – Ashley Ridge High School



Carl Perkins Service Award

Angel Clark Carl Perkins Service Award – SC Department of Education

SC TEACHER GOOGLE DRIVE



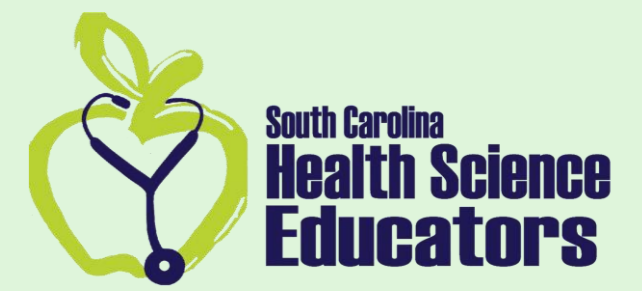
If you are a member of SC HSE
you should have access to the
SCHSE Google Drive.

If you do not,
please email any questions to

schsedrive@gmail.com

Or kledward@lexrich5.org

2023 PROFESSIONAL DEVELOPMENT



October 11-13, 2023

ACTE Region II Leadership Conference

October 16-19, 2023

National Consortium for Health Science Education (NCHSE) –
Professional Development Conference – Seattle, Washington

November 12-14, 2023

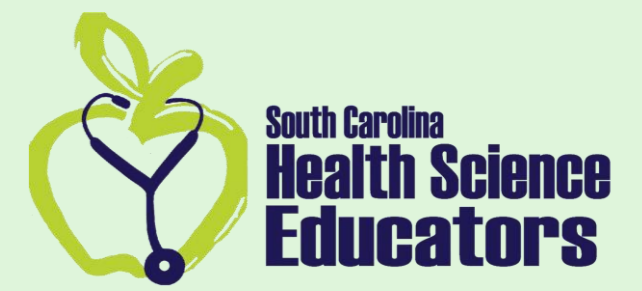
SC HSE Professional Development Conference
Myrtle Beach, SC

[2023 HS Educators Conference - SC HOSA](#)

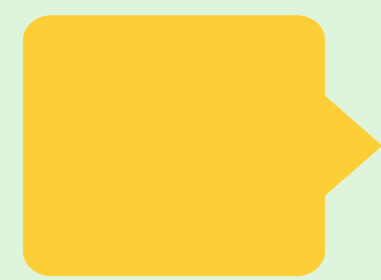
November 29 –December 2, 2023

ACTE Career Tech Vision Professional
Development Conference– Phoenix, AZ

RESOURCES



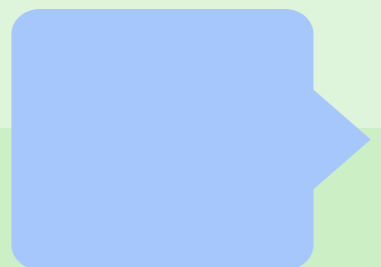
TAKE ADVANTAGE OF THE MATERIAL THAT NCHSE HAS MADE AVAILABLE TO YOU IN THE FORM OF WEBINARS, CURRICULUM ENHANCEMENTS, MEMBERSHIPS, ETC.



[National Consortium for Health Science Education | We help educate the next generation of health professionals \(healthscienceconsortium.org\)](https://healthscienceconsortium.org)

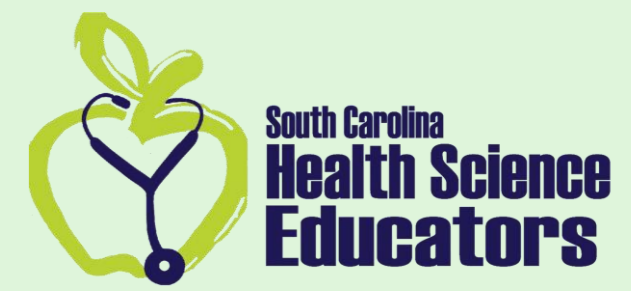


[Webinars | National Consortium for Health Science Education \(healthscienceconsortium.org\)](https://healthscienceconsortium.org)



[NHSS-CHANGES-from-May-2019-for-August-2022.docx \(live.com\)](https://live.com)

RESOURCES CONT'D.



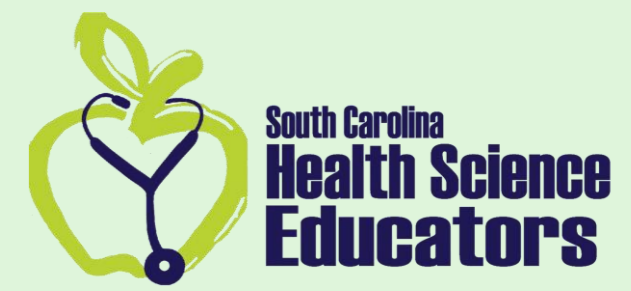
Join (State Level) SCACTE – Health Science Educators division for additional resources: <http://www.scacte.com/>

Join (National Level) NCHSE Health Science Educators Association for additional resources: <https://www.healthscienceconsortium.org/educators/#educators>

For instructional webinars, curriculum enhancements, national teacher organization membership, and additional resources visit: <https://www.healthscienceconsortium.org/>

Join “SC Health Science Educators/HOSA Advisors” Facebook page for a platform to ask questions, interact and network with fellow SC health science educators.

SCHSE 2023 CONFERENCE



SC Health Science Educators Conference, November 12 – 14, 2023 – Myrtle Beach, SC

2023 HSE CONFERENCE KEYNOTE SPEAKERS



DENISE ABBOTT

What I do:

- Science Department Chair at Timpview High School
- Utah HOSA- Future Health Professionals Advisor

Recent Awards:

- 2021 Utah Educators' Association & DoTerra's Outstanding Teacher in Community Service
- 2021 Teacher of the Year for the Health Science Division of ACTE
- 2021 Timpview High School's Teacher of the Year
- 2019 HOSA- Future Health Professionals Western Region Outstanding Advisor
- 2017 U.S. Presidential Scholar Distinguished Teacher



ROBBIE RAUZI

What I do:

- Director of Marketing Experiences at YouScience
- Utah HOSA Competitive Events Director

Recent Awards:

- 2010 National HOSA-Award of Merit, Outstanding HOSA Advisor
- UACTE Outstanding Teacher in Community Service
- 2022 YouScience Employer of the Year
- Utah HOSA Projects

A promotional graphic for the 2023 SC Health Science Educators Conference. It features a background with medical illustrations like a stethoscope and a hand holding a heart. The text "2023 SC HEALTH SCIENCE EDUCATORS CONFERENCE" is in large, bold, blue letters. To the right, "Kim Smith Keynote Speaker" is written in a cursive font. Below the text is a portrait of Kim Smith, a woman with short blonde hair and glasses, smiling. A bio box is located at the bottom left of the graphic.

Kim Smith began her teaching career in 1981 at Alexander Central High School in Taylorsville, North Carolina. After nine years in the classroom, she served as the Health Occupations Education Consultant and HOSA State Advisor at the North Carolina Department of Public Instruction. In 2001 she was named the Assistant Director of National HOSA and later became a facilitator and instructional designer for the Walt Disney Company® and National Geographic Live®. Kim is the owner of CreativEd Services and the author of Teaching Health Science and ten books in the Learning Games and Brain Games and Puzzles series. She is currently a consultant with Integrated Loyalty Systems, helping to improve the patient and employee experience for multiple clients throughout the United States. Kim is a Registered Nurse with a B.A. in Psychology from Lenoir-Rhyne College and a M.Ed. in Curriculum and Supervision from North Carolina State University.